

bs-4898R**[Primary Antibody]****BioSS**
ANTIBODIES

www.bioss.com.cn

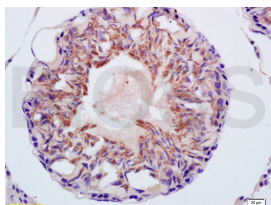
sales@bioss.com.cn

techsupport@bioss.com.cn

400-901-9800

CITED1 Rabbit pAb**— DATASHEET —**

Host: Rabbit Clonality: Polyclonal GeneID: 4435 Target: CITED1 Immunogen: KLH conjugated synthetic peptide derived from human CITED1/ABCC1: 101-193/193. Purification: affinity purified by Protein A Concentration: 1mg/ml Storage: 0.01M TBS (pH7.4) with 1% BSA, 0.02% Proclin300 and 50% Glycerol. Shipped at 4°C. Store at -20°C for one year. Avoid repeated freeze/thaw cycles. Background: This gene encodes a member of the CREB-binding protein/p300-interacting transactivator with Asp/Glu-rich C-terminal domain (CITED) family of proteins. The encoded protein, also known as melanocyte-specific gene 1, may function as a transcriptional coactivator and may play a role in pigmentation of melanocytes. Alternatively spliced transcript variants have been described. [provided by RefSeq, Jan 2009]	Isotype: IgG SWISS: Q99966 Applications: IHC-P (1:100-500) IHC-F (1:100-500) IF (1:100-500) Reactivity: Rat (predicted: Human, Mouse, Pig, Sheep, Cow, Dog) Predicted MW.: 21 kDa Subcellular Location: Cytoplasm ,Nucleus
--	---

— VALIDATION IMAGES —

Tissue/cell: rat testis tissue; 4% Paraformaldehyde-fixed and paraffin-embedded; Antigen retrieval: citrate buffer (0.01M, pH 6.0), Boiling bathing for 15min; Block endogenous peroxidase by 3% Hydrogen peroxide for 30min; Blocking buffer (normal goat serum, C-0005) at 37°C for 20 min; Incubation: Anti-CITED1/ABCC1 Polyclonal Antibody, Unconjugated(bs-4898R) 1:200, overnight at 4°C, followed by conjugation to the secondary antibody(SP-0023) and DAB(C-0010) staining

— SELECTED CITATIONS —

- **[IF=2.2]** Jie Su. et al. Study on the changes of LHR, FSHR and AR with the development of testis cells in Hu sheep. ANIM REPROD SCI. 2023 Sep;256:107306 IF ;Sheep. 37541020