

**bs-11944R****[ Primary Antibody ]****Bioss**  
ANTIBODIES

www.bioss.com.cn

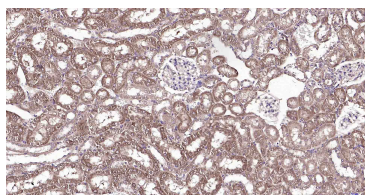
sales@bioss.com.cn

techsupport@bioss.com.cn

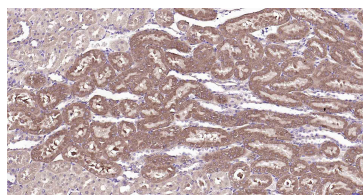
400-901-9800

**RILPL2 Rabbit pAb****DATASHEET**

<b>Host:</b> Rabbit	<b>Isotype:</b> IgG	<b>Applications:</b> <b>IHC-P</b> (1:100-500) <b>IHC-F</b> (1:100-500) <b>IF</b> (1:100-500)  <b>Reactivity:</b> Mouse, Rat (predicted: Human, Pig, Sheep, Cow, Horse)  <b>Predicted MW.:</b> 24 kDa  <b>Subcellular Location:</b> Cytoplasm
<b>Clonality:</b> Polyclonal		
<b>GeneID:</b> 196383	<b>SWISS:</b> Q969X0	
<b>Target:</b> RILPL2		
<b>Immunogen:</b> KLH conjugated synthetic peptide derived from human RILPL2: 111-211/211.		
<b>Purification:</b> affinity purified by Protein A		
<b>Concentration:</b> 1mg/ml		
<b>Storage:</b> 0.01M TBS (pH7.4) with 1% BSA, 0.02% Proclin300 and 50% Glycerol. Shipped at 4°C. Store at -20°C for one year. Avoid repeated freeze/thaw cycles.		
<b>Background:</b> RILPL2 is a 211 amino acid protein that belongs to the RILPL family. RILPL2 does not regulate lysosomal morphology or distribution. RILPL2 shares 32% and 18% amino acid identity with RILPL1 and RILP, respectively. RILPL2 as a novel interacting partner for the actin-based molecular motor MyoVa, and has a novel role for RILPL2 in controlling neuronal morphogenesis. It has been suggested that there is also a novel role for RILPL2 in the regulation of cellular shape and dendritic-spine morphogenesis, probably via the Rac1-Pak pathway. PCR analysis of human tissues detects highest RILPL2 expression in lung, followed by placenta. Lower expression is detected in liver, kidney, pancreas, heart and brain, but no expression is detected in skeletal muscle. The RILPL2 gene is conserved in chimpanzee, dog, cow, mouse, rat, chicken and zebrafish, and maps to human chromosome 12q24.31.		

**VALIDATION IMAGES**

Paraformaldehyde-fixed, paraffin embedded  
Mouse Kidney; Antigen retrieval by boiling in  
sodium citrate buffer (pH6.0) for 15 min;  
Antibody incubation with RILPL2 Polyclonal  
Antibody, Unconjugated (bs-11944R) at 1:200  
overnight at 4°C, followed by conjugation to the  
SP Kit (Rabbit, SP-0023) and DAB (C-0010)  
staining.



Paraformaldehyde-fixed, paraffin embedded Rat  
Kidney; Antigen retrieval by boiling in sodium  
citrate buffer (pH6.0) for 15 min; Antibody  
incubation with RILPL2 Polyclonal Antibody,  
Unconjugated (bs-11944R) at 1:200 overnight at  
4°C, followed by conjugation to the SP Kit  
(Rabbit, SP-0023) and DAB (C-0010) staining.