

**bs-6801R****[ Primary Antibody ]****TCERG1 Rabbit pAb****Bioss**  
**ANTIBODIES**

www.bioss.com.cn

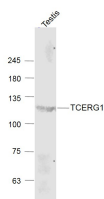
sales@bioss.com.cn

techsupport@bioss.com.cn

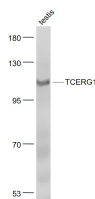
400-901-9800

**— DATASHEET —**

<b>Host:</b> Rabbit	<b>Isotype:</b> IgG	<b>Applications:</b> WB (1:500-2000)
<b>Clonality:</b> Polyclonal		<b>Reactivity:</b> Mouse (predicted: Human, Rat, Rabbit, Pig, Sheep, Cow, Chicken, Dog, Horse)
<b>GeneID:</b> 10915	<b>SWISS:</b> O14776	
<b>Target:</b> TCERG1		<b>Predicted MW.:</b> 124 kDa
<b>Immunogen:</b> KLH conjugated synthetic peptide derived from human TCERG1/CA150: 701-800/1098.		<b>Subcellular Location:</b> Nucleus
<b>Purification:</b> affinity purified by Protein A		
<b>Concentration:</b> 1mg/ml		
<b>Storage:</b> 0.01M TBS (pH7.4) with 1% BSA, 0.02% Proclin300 and 50% Glycerol. Shipped at 4°C. Store at -20°C for one year. Avoid repeated freeze/thaw cycles.		
<b>Background:</b> CA150 is a nuclear protein that regulates transcriptional elongation and pre-mRNA splicing. It interacts with the hyperphosphorylated C-terminal domain of RNA polymerase II via multiple FF domains, and with the pre-mRNA splicing factor SF1 via a WW domain.		

**— VALIDATION IMAGES —**

Sample: Testis(Mouse) Lysate at 40 ug Primary:  
Anti-TCERG1 (bs-6801R) at 1/1000 dilution  
Secondary: IRDye800CW Goat Anti-Rabbit IgG at  
1/20000 dilution Predicted band size: 124 kD  
Observed band size: 124kD



Sample: Testis (Mouse) Lysate at 40 ug Primary:  
Anti- TCERG1 (bs-6801R) at 1/1000 dilution  
Secondary: IRDye800CW Goat Anti-Rabbit IgG at  
1/20000 dilution Predicted band size: 124 kD  
Observed band size:124 kD