

**bsm-31105M****[ Primary Antibody ]****beta Tubulin Mouse mAb****BioSS**  
ANTIBODIES

www.bioss.com.cn

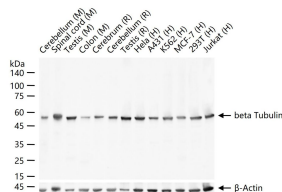
sales@bioss.com.cn

techsupport@bioss.com.cn

400-901-9800

**— DATASHEET —**

<b>Host:</b> Mouse	<b>Isotype:</b> IgG	<b>Applications:</b> WB (1:50000-100000)  <b>Reactivity:</b> Human, Mouse, Rat  <b>Predicted MW.:</b> 50 kDa  <b>Subcellular Location:</b> Cytoplasm
<b>Clonality:</b> Monoclonal	<b>CloneNo.:</b> 1B10	
<b>GeneID:</b> 203068	<b>SWISS:</b> P07437	
<b>Target:</b> beta Tubulin		
<b>Purification:</b> affinity purified by Protein A		
<b>Concentration:</b> 1mg/ml		
<b>Storage:</b> 0.01M TBS (pH7.4) with 1% BSA, 0.02% Proclin300 and 50% Glycerol. Shipped at 4°C. Store at -20°C for one year. Avoid repeated freeze/thaw cycles.		
<b>Background:</b> This gene encodes a beta tubulin protein. This protein forms a dimer with alpha tubulin and acts as a structural component of microtubules. Mutations in this gene cause cortical dysplasia, complex, with other brain malformations 6. Alternative splicing results in multiple splice variants. There are multiple pseudogenes for this gene on chromosomes 1, 6, 7, 8, 9, and 13. [provided by RefSeq, Jun 2014]		

**— VALIDATION IMAGES —**

25 ug total protein per lane of various lysates (see on figure) probed with beta Tubulin monoclonal antibody, unconjugated (bsm-31105M) at 1:50000 dilution and 4°C overnight incubation. Followed by conjugated secondary antibody incubation at r.t. for 60 min.