

Desmocollin 1 Rabbit pAb

Catalog Number: bs-6307R

Target Protein: Desmocollin 1

Concentration: 1mg/ml

Form: Liquid

Host: Rabbit

Clonality: Polyclonal

Isotype: IgG

Applications: IHC-P (1:100-500), IHC-F (1:100-500), IF (1:100-500)

Reactivity: Human (predicted:Mouse, Rat, Pig, Cow, Dog, Horse)

Predicted MW: 85 kDa

Entrez Gene: 1823

Swiss Prot: Q08554

Source: KLH conjugated synthetic peptide derived from human Desmocollin 1: 371-470/894.

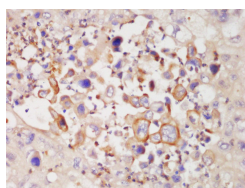
Purification: affinity purified by Protein A

Storage: 0.01M TBS (pH7.4) with 1% BSA, 0.02% Proclin300 and 50% Glycerol.

Shipped at 4°C. Store at -20°C for one year. Avoid repeated freeze/thaw cycles.

Background: The protein encoded by this gene is a calcium-dependent glycoprotein that is a member of the desmocollin subfamily of the cadherin superfamily. These desmosomal family members, along with the desmogleins, are found primarily in epithelial cells where they constitute the adhesive proteins of the desmosome cell-cell junction and are required for cell adhesion and desmosome formation. The desmosomal family members are arranged in two clusters on chromosome 18, occupying less than 650 kb combined. Alternative splicing results in two transcript variants encoding distinct isoforms. [provided by RefSeq, Jul 2008]

VALIDATION IMAGES



Tissue/cell: human lung carcinoma; 4% Paraformaldehyde-fixed and paraffin-embedded; Antigen retrieval: citrate buffer (0.01M, pH 6.0), Boiling bathing for 15min; Block endogenous peroxidase by 3% Hydrogen peroxide for 30min; Blocking buffer (normal goat serum, C-0005) at 37°C for 20 min; Incubation: Anti-CDHF1 Polyclonal Antibody, Unconjugated(bs-6307R) 1:200, overnight at 4°C, followed by conjugation to the secondary antibody(SP-0023) and DAB(C-0010) staining