
Syncytin 1 Rabbit pAb

Catalog Number: bs-2962R

Target Protein: Syncytin 1

Concentration: 1mg/ml

Form: Liquid

Host: Rabbit

Clonality: Polyclonal

Isotype: IgG

Applications: WB (1:500-2000)

Reactivity: Human, Mouse

Predicted MW: 59 kDa

Entrez Gene: 30816

Swiss Prot: Q9UQF0

Source: KLH conjugated synthetic peptide derived from human Syncytin 1: 451-538/538.

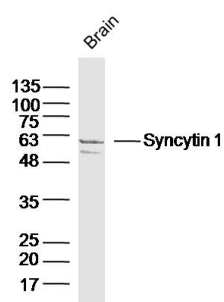
Purification: affinity purified by Protein A

Storage: 0.01M TBS (pH7.4) with 1% BSA, 0.02% Proclin300 and 50% Glycerol.

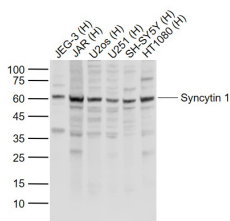
Shipped at 4°C. Store at -20°C for one year. Avoid repeated freeze/thaw cycles.

Background: Many different human endogenous retrovirus (HERV) families are expressed in normal placental tissue at high levels, suggesting that HERVs are functionally important in reproduction. This gene is part of an HERV provirus on chromosome 7 that has inactivating mutations in the gag and pol genes. This gene is the envelope glycoprotein gene which appears to have been selectively preserved. The gene's protein product is expressed in the placental syncytiotrophoblast and is involved in fusion of the cytotrophoblast cells to form the syncytial layer of the placenta. The protein has the characteristics of a typical retroviral envelope protein, including a furin cleavage site that separates the surface (SU) and transmembrane (TM) proteins which form a heterodimer. Alternatively spliced transcript variants encoding the same protein have been found for this gene. [provided by RefSeq, Mar 2010]

VALIDATION IMAGES



Sample: Brain (Mouse) Lysate at 40 ug Primary: Anti-Syncytin 1 (bs-2962R) at 1/300 dilution Secondary: IRDye800CW Goat Anti-Rabbit IgG at 1/20000 dilution Predicted band size: 33/58 kD Observed band size: 58kD



Sample: Lane 1: JEG-3 (Human) Cell Lysate at 30 ug Lane 2: JAR (Human) Cell Lysate at 30 ug Lane 3: U2os (Human) Cell Lysate at 30 ug Lane 4: U251 (Human) Cell Lysate at 30 ug Lane 5: SH-SY5Y (Human) Cell Lysate at 30 ug Lane 6: HT1080 (Human) Cell Lysate at 30 ug Primary: Anti-Syncytin 1 (bs-2962R) at 1/1000 dilution Secondary: IRDye800CW Goat Anti-Rabbit IgG at 1/20000 dilution Predicted band size: 58 kD Observed band size: 60 kD

PRODUCT SPECIFIC PUBLICATIONS

[IF=17.694] Whitlock, Jarred M.. et al. Cell surface-bound La protein regulates the cell fusion stage of osteoclastogenesis. NAT COMMUN. 2023 Feb;14(1):1-19 WB ; Mouse,Human . 36739273

[IF=12.7] Jiao Wang. et al. Influenza A virus infection disrupts the function of syncytiotrophoblast cells and contributes to adverse pregnancy outcomes. J MED VIROL. 2024 May;96(6):e29687 WB ; Human . 38783821

[IF=5.168] Díaz-Carballo et al. Cytotoxic stress induces transfer of mitochondria-associated human endogenous retroviral RNA and proteins between cancer cells. (2017) Oncotarget. 8:95945-95964 Other ; Human . 29221178

[IF=4.757] Rachana Pandit. et al. Canine Coronavirus Infection Modulates the Biogenesis and Composition of Cell-Derived Extracellular Vesicles. BIOMEDICINES. 2023 Mar;11(3):976 Other ; Cat . 36979955

[IF=4.43] Díaz-Carballo, David, et al. "Therapeutic potential of antiviral drugs targeting chemorefractory colorectal adenocarcinoma cells overexpressing endogenous retroviral elements." Journal of Experimental & Clinical Cancer Research 34.1 (2015): 81. WB ; ="Human" . 26260344