

**bs-2984R****[ Primary Antibody ]****phospho-PLB (Ser16) Rabbit pAb****BioSS**  
**ANTIBODIES**

www.bioss.com.cn

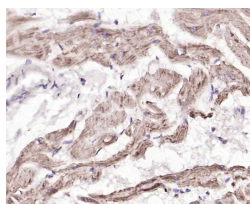
sales@bioss.com.cn

techsupport@bioss.com.cn

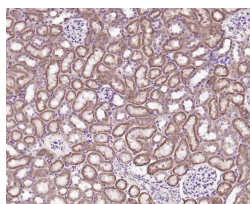
400-901-9800

**— DATASHEET —**

<b>Host:</b> Rabbit <b>Clonality:</b> Polyclonal <b>GeneID:</b> 5350 <b>Target:</b> phospho-PLB (Ser16) <b>Immunogen:</b> KLH conjugated synthesised phosphopeptide derived from human Cardiac phospholamban around the phosphorylation site of Ser16: RA(p-S)TI. <b>Purification:</b> affinity purified by Protein A <b>Concentration:</b> 1mg/ml <b>Storage:</b> 0.01M TBS (pH7.4) with 1% BSA, 0.02% Proclin300 and 50% Glycerol. Shipped at 4°C. Store at -20°C for one year. Avoid repeated freeze/thaw cycles. <b>Background:</b> The Sarco(endo)plasmic-reticulum (SER) regulatory protein, Phospholamban (PLB), is a small, plasma membrane-associated phospho-protein found in the SER of cardiac, smooth and slow-twitch muscle. Believed to assemble into a pentamer, PLB regulates cardiac contractility and Ca <sup>2+</sup> affinity for cardiac SER Ca <sup>2+</sup> ATPase (SERCA2a). Non-phosphorylated PLB associates with SERCA2a, and inhibits Ca <sup>2+</sup> reuptake into the SER. PLB activation occurs when key Serine/Threonine residues in PLB (Ser-10, Ser-16, Thr-17) are phosphorylated by numerous effectors, which include PKC, PKA, PKG, and CaM kinase. Phosphorylation of PLB causes dissociation from SERCA2a and a subsequent increase in the rate of Ca <sup>2+</sup> reuptake into the SER, which accelerates ventricular relaxation.	<b>Isotype:</b> IgG <b>SWISS:</b> P26678	<b>Applications:</b> <b>IHC-P</b> (1:100-500) <b>IHC-F</b> (1:100-500) <b>IF</b> (1:100-500)  <b>Reactivity:</b> Human, Mouse, Rat (predicted: Rabbit, Pig, Cow, Dog)  <b>Predicted MW.:</b> 5.7 kDa  <b>Subcellular Location:</b> Cell membrane ,Cytoplasm
--	---	--

**— VALIDATION IMAGES —**

Paraformaldehyde-fixed, paraffin embedded (human heart); Antigen retrieval by boiling in sodium citrate buffer (pH6.0) for 15min; Block endogenous peroxidase by 3% hydrogen peroxide for 20 minutes; Blocking buffer (normal goat serum) at 37°C for 30min; Incubation with (phospho-PLB (Ser16)) Polyclonal Antibody, Unconjugated (bs-2984R) at 1:200 overnight at 4°C, followed by operating according to SP Kit(Rabbit) (sp-0023) instructions and DAB staining.



Paraformaldehyde-fixed, paraffin embedded (mouse kidney); Antigen retrieval by boiling in sodium citrate buffer (pH6.0) for 15min; Block endogenous peroxidase by 3% hydrogen peroxide for 20 minutes; Blocking buffer (normal goat serum) at 37°C for 30min; Incubation with (phospho-PLB (Ser16)) Polyclonal Antibody, Unconjugated (bs-2984R) at 1:200 overnight at 4°C, followed by operating according to SP Kit(Rabbit) (sp-0023) instructions and DAB staining.