

**bs-13181R****[ Primary Antibody ]****FLNB Rabbit pAb****BioSS**  
ANTIBODIES

www.bioss.com.cn

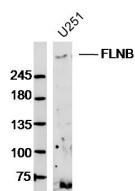
sales@bioss.com.cn

techsupport@bioss.com.cn

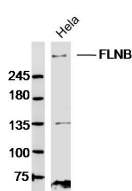
400-901-9800

**— DATASHEET —**

<b>Host:</b> Rabbit	<b>Isotype:</b> IgG	<b>Applications:</b> WB (1:500-2000)
<b>Clonality:</b> Polyclonal		
<b>GeneID:</b> 2317	<b>SWISS:</b> O75369	
<b>Target:</b> FLNB		
<b>Immunogen:</b> KLH conjugated synthetic peptide derived from human FLNB/Filamin 3: 1551-1650/2602.		
<b>Purification:</b> affinity purified by Protein A		<b>Reactivity:</b> Human (predicted: Mouse, Rat, Rabbit, Sheep, Cow, Dog)
<b>Concentration:</b> 1mg/ml		<b>Predicted MW.:</b> 278 kDa
<b>Storage:</b> 0.01M TBS (pH7.4) with 1% BSA, 0.02% Proclin300 and 50% Glycerol. Shipped at 4°C. Store at -20°C for one year. Avoid repeated freeze/thaw cycles.		<b>Subcellular Location:</b> Cytoplasm
<b>Background:</b> This gene encodes a member of the filamin family. The encoded protein interacts with glycoprotein Ib alpha as part of the process to repair vascular injuries. The platelet glycoprotein Ib complex includes glycoprotein Ib alpha, and it binds the actin cytoskeleton. Mutations in this gene have been found in several conditions: atelosteogenesis type 1 and type 3; boomerang dysplasia; autosomal dominant Larsen syndrome; and spondylarthritis syndrome. Multiple alternatively spliced transcript variants that encode different protein isoforms have been described for this gene. [provided by RefSeq, Nov 2009].		

**— VALIDATION IMAGES —**

Sample:U251(Human)Cell Lysate at 40 ug  
Primary: Anti-FLNB(bs-13181R)at 1/300 dilution  
Secondary: IRDye800CW Goat Anti-RabbitIgG at 1/20000 dilution Predicted band size: 278kD  
Observed band size: 278kD



Sample:HeLa (Human)Cell Lysate at 40 ug  
Primary: Anti-FLNB(bs-13181R)at 1/300 dilution  
Secondary: IRDye800CW Goat Anti-RabbitIgG at 1/20000 dilution Predicted band size: 278kD  
Observed band size: 278kD