

**bs-17859R**

**[ Primary Antibody ]**

## MSL3L2 Rabbit pAb

**BioSS**  
ANTIBODIES

www.bioss.com.cn

sales@bioss.com.cn

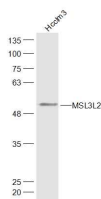
techsupport@bioss.com.cn

400-901-9800

### — DATASHEET —

<b>Host:</b> Rabbit	<b>Isotype:</b> IgG	<b>Applications:</b> WB (1:500-2000)
<b>Clonality:</b> Polyclonal		
<b>GeneID:</b> 151507	<b>SWISS:</b> P0C860	
<b>Target:</b> MSL3L2		
<b>Immunogen:</b> KLH conjugated synthetic peptide derived from human MSL3L2: 1-100/447.		
<b>Purification:</b> affinity purified by Protein A		<b>Reactivity:</b> Human
<b>Concentration:</b> 1mg/ml		
<b>Storage:</b> 0.01M TBS (pH7.4) with 1% BSA, 0.02% Proclin300 and 50% Glycerol. Shipped at 4°C. Store at -20°C for one year. Avoid repeated freeze/thaw cycles.		<b>Predicted MW.:</b> 51 kDa
<b>Background:</b> MSL3L2 contains 1 chromo domain. It may be involved in chromatin remodeling and transcriptional regulation.		<b>Subcellular Location:</b> Nucleus

### — VALIDATION IMAGES —



Sample: Hcclm3(Human) Cell Lysate at 30 ug  
Primary: Anti-MSL3L2 (bs-17859R) at 1/300  
dilution Secondary: IRDye800CW Goat Anti-  
Rabbit IgG at 1/20000 dilution Predicted band  
size: 51 kD Observed band size: 51 kD