

bs-5901R

[Primary Antibody]

OS9 Rabbit pAb

Bioss
ANTIBODIES

www.bioss.com.cn

sales@bioss.com.cn

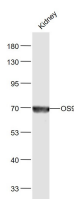
techsupport@bioss.com.cn

400-901-9800

— DATASHEET —

Host: Rabbit	Isotype: IgG	Applications: WB (1:500-2000)
Clonality: Polyclonal		Reactivity: Mouse (predicted: Human, Rat, Rabbit, Sheep, Cow, Dog, Horse)
GeneID: 10956	SWISS: Q13438	Predicted MW.: 76 kDa
Target: OS9		Subcellular Location: Cytoplasm
Immunogen: KLH conjugated synthetic peptide derived from human OS9: 101-200/667.		
Purification: affinity purified by Protein A		
Concentration: 1mg/ml		
Storage: 0.01M TBS (pH7.4) with 1% BSA, 0.02% Proclin300 and 50% Glycerol. Shipped at 4°C. Store at -20°C for one year. Avoid repeated freeze/thaw cycles.		
Background: Lectin which functions in endoplasmic reticulum (ER) quality control and ER-associated degradation (ERAD). May bind terminally misfolded non-glycosylated proteins as well as improperly folded glycoproteins, retain them in the ER, and possibly transfer them to the ubiquitination machinery and promote their degradation. Possible targets include TRPV4.		

— VALIDATION IMAGES —



Sample: Kidney (Mouse) Lysate at 40 ug Primary:
Anti-OS9 (bs-5901CW Goat Anti-Rabbit IgG at
1/20000 dilution Predicted band size: 76 kD
Observed band size: 70 kD