

bs-5875R**[Primary Antibody]****MMP-23 Rabbit pAb****BioSS**
ANTIBODIES

www.bioss.com.cn

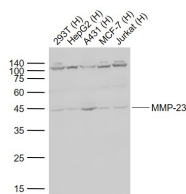
sales@bioss.com.cn

techsupport@bioss.com.cn

400-901-9800

— DATASHEET —

Host: Rabbit	Isotype: IgG	Applications: WB (1:500-2000)
Clonality: Polyclonal		Reactivity: Human (predicted: Mouse, Rat, Pig, Cow, Chicken, Dog)
GeneID: 8510	SWISS: O75900	
Target: MMP-23		Predicted MW.: 36/44 kDa
Immunogen: KLH conjugated synthetic peptide derived from human MMP-23: 281-380/390.		Subcellular Location: Cell membrane ,Cytoplasm
Purification: affinity purified by Protein A		
Concentration: 1mg/ml		
Storage: 0.01M TBS (pH7.4) with 1% BSA, 0.02% Proclin300 and 50% Glycerol. Shipped at 4°C. Store at -20°C for one year. Avoid repeated freeze/thaw cycles.		
Background: Matrix Metalloproteinase 23 is a member of the matrix metalloproteinase (MMP) family, and it is part of a duplicated region of chromosome 1p36.3. Proteins of the matrix metalloproteinase (MMP) family are involved in the breakdown of extracellular matrix in normal physiological processes, such as embryonic development, reproduction, and tissue remodeling, as well as in disease processes, such as arthritis and metastasis. This gene belongs to the more telomeric copy of the duplicated region.		

— VALIDATION IMAGES —

Sample: Lane 1: Human A549 cell lysates Lane 2: Human Hela cell lysates Lane 3: Human Jurkat cell lysates Lane 4: Human A431 cell lysates Lane 5: Human Jurkat cell lysates Primary: Anti-MMP-23 (bs-5875R) at 1/1000 dilution Secondary: IRDye800CW Goat Anti-Rabbit IgG at 1/20000 dilution Predicted band size: 36/44 kD Observed band size: 44 kD