

**bs-1026R****[ Primary Antibody ]****Desmin Rabbit pAb****Bioss**  
**ANTIBODIES**

www.bioss.com.cn

sales@bioss.com.cn

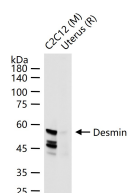
techsupport@bioss.com.cn

400-901-9800

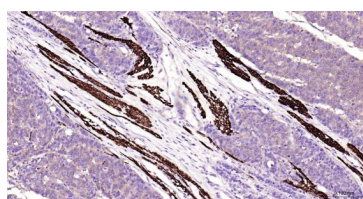
**— DATASHEET —****Host:** Rabbit**Isotype:** IgG**Clonality:** Polyclonal**GeneID:** 1674**SWISS:** P17661**Target:** Desmin**Immunogen:** KLH conjugated synthetic peptide derived from human Desmin: 261-360/470.**Purification:** affinity purified by Protein A**Concentration:** 1mg/ml**Storage:** 0.01M TBS (pH7.4) with 1% BSA, 0.02% Proclin300 and 50% Glycerol.

Shipped at 4°C. Store at -20°C for one year. Avoid repeated freeze/thaw cycles.

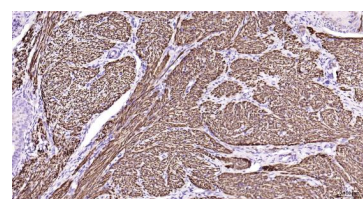
**Background:** Desmin is a muscle-specific, type III intermediate filament that integrates the sarcolemma, Z disk, and nuclear membrane in sarcomeres and regulates sarcomere architecture. In adult striated muscle they form a fibrous network connecting myofibrils to each other and to the plasma membrane from the periphery of the Z line structures. Defects in Desmin are the cause of desmin related cardio skeletal myopathy (CSM) also known as desmin related myopathy (DRM). CSM is characterized by skeletal muscle weakness associated with cardiac conduction blocks, arrhythmias, restrictive heart failure, and by intracytoplasmic accumulation of desmin reactive deposits in cardiac and skeletal muscle cells. A desmin related myopathy can have a distal onset, it is then known as hereditary distal myopathy (HDM). Defects in Desmin are also the cause of dilated cardiomyopathy type 1I (CMD1I). CMD1I is an autosomal form of dilated cardiomyopathy characterized by ventricular dilatation and impaired systolic function. Antidesmin antibodies are useful in identification of tumours of myogenic origin

**Applications:** WB (1:500-5000)**IHC-P** (1:100-1:500)**IHC-F** (1:100-1:500)**IF** (1:100-1:500)**ICC/IF** (1:50-1:200)**Reactivity:** Human, Mouse, Rat**Predicted MW.:** 52 kDa**Subcellular Location:** Cytoplasm**— VALIDATION IMAGES —**

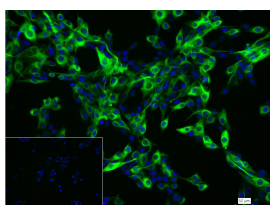
25 ug total protein per lane of various lysates (see on figure) probed with Desmin monoclonal antibody, unconjugated (bs-1026R) at 1:5000 dilution and 4°C overnight incubation. Followed by conjugated secondary antibody incubation at r.t. for 60 min.



Paraformaldehyde-fixed, paraffin embedded Human Esophageal Cancer; Antigen retrieval by boiling in sodium citrate buffer (pH6.0) for 15 min; Antibody incubation with Desmin Polyclonal Antibody, Unconjugated (bs-1026R) at 1:200 overnight at 4°C, followed by conjugation to the bs-0295G-HRP and DAB (C-0010) staining.



Paraformaldehyde-fixed, paraffin embedded Human Endometrial; Antigen retrieval by boiling in sodium citrate buffer (pH6.0) for 15 min; Antibody incubation with Desmin Polyclonal Antibody, Unconjugated (bs-1026R) at 1:200 overnight at 4°C, followed by conjugation to the bs-0295G-HRP and DAB (C-0010) staining.



Important Note: This product as supplied is intended for research use only, not for use in human, therapeutic or diagnostic applications.

4% Paraformaldehyde-fixed C2C12 (M) cell;  
Triton X-100 at r.t. for 20 min; Antibody  
incubation with (Desmin) polyclonal Antibody,  
unconjugated (bs-1026R) 1:100, 90 min at 37°C;  
followed by conjugated Goat Anti-Rabbit IgG  
antibody (green, bs-40295G-FITC) at 37°C for 90  
min, DAPI (blue, C02-04002) was used to stain  
the cell nuclei. PBS instead of the primary  
antibody was used as the blank control.

---

## — SELECTED CITATIONS —

---

- **[IF=9.2]** Zhaojing Huang. et al. Cold-temperature 3D bioprinting for cultured meat: A case of rainbow trout cell cultivation. SUSTAIN MATER TECHNO. 2025 May;;e01422 IF ;Fish. 10.1016/j.susmat.2025.e01422
- **[IF=8.7]** Qipu Xin. et al. Tailored microcarriers from solid to porous: Rapid doubling and differentiation behaviors of piscine satellite cells. Sustainable Materials and Technologies. IF ;Large yellow croaker. 10.1016/j.susmat.2025.e01368
- **[IF=7.7]** Hanghang Lou. et al. Highly aligned myotubes formation of piscine satellite cells in 3D fibrin hydrogels of cultured meat. INT J BIOL MACROMOL. 2024 Dec;282:136879 WB ;Fish. 39490877
- **[IF=8.39]** Liu, Yanchun, et al. "HB-EGF Embedded in PGA/PLLA Scaffolds via Subcritical CO<sub>2</sub> Augments the Production of Tissue Engineered Intestine." Biomaterials (2016). IF ;="Rat". 27380441
- **[IF=7.7]** Qipu Xin. et al. Stable cytoactivity of piscine satellite cells in rice bran-gelatin hydrogel scaffold of cultured meat. INT J BIOL MACROMOL. 2024 Oct;277:134242 IF ;Fish. 39084438