

bs-0623R**[Primary Antibody]****Bioss**
ANTIBODIES

www.bioss.com.cn

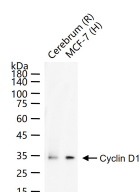
sales@bioss.com.cn

techsupport@bioss.com.cn

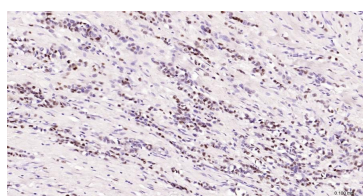
400-901-9800

Cyclin D1 Rabbit pAb**DATASHEET**

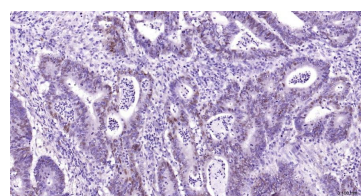
Host: Rabbit Clonality: Polyclonal GeneID: 595 Target: Cyclin D1 Immunogen: KLH conjugated synthetic peptide derived from human Cyclin D1: 61-110/295. Purification: affinity purified by Protein A Concentration: 1mg/ml Storage: 0.01M TBS (pH7.4) with 1% BSA, 0.02% Proclin300 and 50% Glycerol. Shipped at 4°C. Store at -20°C for one year. Avoid repeated freeze/thaw cycles. Background: The protein encoded by this gene belongs to the highly conserved cyclin family, whose members are characterized by a dramatic periodicity in protein abundance throughout the cell cycle. Cyclins function as regulators of CDK kinases. Different cyclins exhibit distinct expression and degradation patterns which contribute to the temporal coordination of each mitotic event. This cyclin forms a complex with and functions as a regulatory subunit of CDK4 or CDK6, whose activity is required for cell cycle G1/S transition. This protein has been shown to interact with tumor suppressor protein Rb and the expression of this gene is regulated positively by Rb. Mutations, amplification and overexpression of this gene, which alters cell cycle progression, are observed frequently in a variety of tumors and may contribute to tumorigenesis. [provided by RefSeq, Jul 2008].	Isotype: IgG SWISS: P24385	Applications: WB (1:500-2000) IHC-P (1:50-200) IHC-F (1:50-200) IF (1:50-200) ICC/IF (1:50-200) Reactivity: Human, Mouse, Rat Predicted MW.: 32 kDa Subcellular Location: Cell membrane ,Cytoplasm Location: ,Nucleus
---	---	---

VALIDATION IMAGES

25 ug total protein per lane of various lysates (see on figure) probed with Cyclin D1 polyclonal antibody, unconjugated (bs-0623R) at 1:2000 dilution and 4°C overnight incubation. Followed by conjugated secondary antibody incubation at r.t. for 60 min.



Paraformaldehyde-fixed, paraffin embedded Human Breast Cancer; Antigen retrieval by boiling in sodium citrate buffer (pH6.0) for 15 min; Antibody incubation with Cyclin D1 Polyclonal Antibody, Unconjugated (bs-0623R) at 1:200 overnight at 4°C, followed by conjugation to the bs-0295G-HRP and DAB (C-0010) staining.



Paraformaldehyde-fixed, paraffin embedded Human Colon Cancer; Antigen retrieval by boiling in sodium citrate buffer (pH6.0) for 15 min; Antibody incubation with Cyclin D1 Polyclonal Antibody, Unconjugated (bs-0623R) at 1:200 overnight at 4°C, followed by conjugation to the bs-0295G-HRP and DAB (C-0010) staining.

SELECTED CITATIONS

- **[IF=14.903]** Luchen Sun. et al. A novel mesenchymal stem cell-based regimen for acute myeloid leukemia differentiation therapy. ACTA PHARM SIN B. 2023 May;; WB ;Human. 10.1016/j.apsb.2023.05.007
- **[IF=13.273]** Long Zhao. et al. Juglone-loaded metal-organic frameworks for H2O2 self-modulating enhancing chemodynamic therapy against prostate cancer. Chem Eng J. 2022 Feb;430:133057 WB ;Human. 10.1016/j.cej.2021.133057

Important Note: This product as supplied is intended for research use only, not for use in human, therapeutic or diagnostic applications.

- **[IF=8.755]** Sijie Wang. et al. PFKFB4 facilitates palbociclib resistance in oestrogen receptor-positive breast cancer by enhancing stemness. CELL PROLIFERAT. 2022 Sep;;e13337 WB ;Human. 36127291
- **[IF=8.74]** Chen et al. STAT1 inhibits human hepatocellular carcinoma cell growth through induction of p53 and Fbxw7. (2015) Cancer.Cell.Int. 15:111 WB ;Human. 26617467
- **[IF=9.429]** Li, Guang. et al. Synergetic delivery of artesunate and isosorbide 5-mononitrate with reduction-sensitive polymer nanoparticles for ovarian cancer chemotherapy. J NANOBIOECHANOL. 2022 Dec;20(1):1-13 WB ;Human. 36335352