

bs-1009R**[Primary Antibody]****CXCR1 Rabbit pAb****BioSS**
ANTIBODIES

www.bioss.com.cn

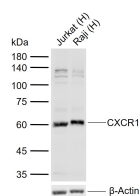
sales@bioss.com.cn

techsupport@bioss.com.cn

400-901-9800

— DATASHEET —

Host: Rabbit Clonality: Polyclonal GeneID: 3577 Target: CXCR1 Immunogen: KLH conjugated synthetic peptide derived from human CXCR1: 186-280/350. < Cytoplasmic > Purification: affinity purified by Protein A Concentration: 1mg/ml Storage: 0.01M TBS (pH7.4) with 1% BSA, 0.02% Proclin300 and 50% Glycerol. Shipped at 4°C. Store at -20°C for one year. Avoid repeated freeze/thaw cycles. Background: The protein encoded by this gene is a member of the G-protein-coupled receptor family. This protein is a receptor for interleukin 8 (IL8). It binds to IL8 with high affinity, and transduces the signal through a G-protein activated second messenger system. Knockout studies in mice suggested that this protein inhibits embryonic oligodendrocyte precursor migration in developing spinal cord. This gene, IL8RB, a gene encoding another high affinity IL8 receptor, as well as IL8RBP, a pseudogene of IL8RB, form a gene cluster in a region mapped to chromosome 2q33-q36. [provided by RefSeq, Jul 2008]	Isotype: IgG SWISS: P25024	Applications: WB (1:500-2000) Reactivity: Human (predicted: Rabbit) Predicted MW.: 40 kDa Subcellular Location: Cell membrane
--	---	--

— VALIDATION IMAGES —

Sample: Lane 1: Human Jurkat cell lysates Lane 2: Human Raji cell lysates Primary: Anti-CXCR1 (bs-1009R) at 1/1000 dilution Secondary: IRDye800CW Goat Anti-Rabbit IgG at 1/20000 dilution Predicted band size: 40 kDa Observed band size: 61 kDa

— SELECTED CITATIONS —

- **[IF=8.786]** Guangxu Xiao. et al. CXCR1 and its downstream NF-κB inflammation signaling pathway as a key target of Guanxinning injection for myocardial ischemia/reperfusion injury.. FRONT IMMUNOL. 2022 Oct;13:1007341-1007341 WB,IHC,IF ;Mouse. 36325326
- **[IF=2.57]** Schneberger, D., et al. "CXCR1/CXCR2 antagonist CXCL8 (3-74) K11R/G31P blocks lung inflammation in swine barn dust-instilled mice." Pulmonary Pharmacology & Therapeutics (2015). IHC ;="Mouse". 25681618
- **[IF=3.37]** Chengfei Xu. et al. CXCR1 participates in bone cancer pain induced by Walker 256 breast cancer cells in female rats. MOL PAIN. ;(): WB,IF ;Rat. 36227008
- **[IF=2.24]** Tang, Cui, et al. "High expression of GPER1, EGFR and CXCR1 is associated with lymph node metastasis in papillary thyroid carcinoma." International Journal of Clinical and Experimental Pathology 7.6 (2014): 3213-3223. IHC

Important Note: This product as supplied is intended for research use only, not for use in human, therapeutic or diagnostic applications.

;="Human". 25031721

- **[IF=1.89]** Zhao, Le, et al. "Role of GPER1, EGFR and CXCR1 in differentiating between malignant follicular thyroid carcinoma and benign follicular thyroid adenoma." *International Journal of Clinical and Experimental Pathology* 8.9 (2015): 11236-11247. IHC ;="Human". 26617848