

bs-1050R**[Primary Antibody]****BioSS**
ANTIBODIES

www.bioss.com.cn

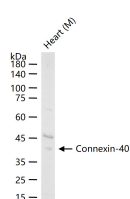
sales@bioss.com.cn

techsupport@bioss.com.cn

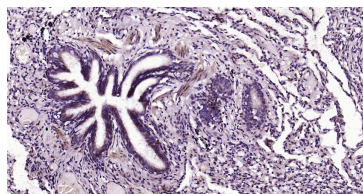
400-901-9800

Connexin-40 Rabbit pAb**— DATASHEET —**

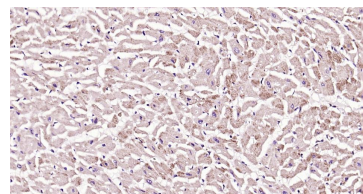
| | | |
|--------------------------------------------------------------------------------------------------------------------------------------------------------------------------------------------------------------------------------------------------------------------------------------------------------------------------------------------------------------------------------------------------------------------------------------------------------------------------|----------------------|---------------------------------------------|
| Host: Rabbit | Isotype: IgG | Applications: WB (1:500-2000) |
| Clonality: Polyclonal | | IHC-P (1:100-500) |
| GeneID: 2702 | SWISS: P36382 | IHC-F (1:100-500) |
| Target: Connexin-40 | | IF (1:100-500) |
| Immunogen: KLH conjugated synthetic peptide derived from human Connexin-40: 301-358/358. < Cytoplasmic > | | Reactivity: Human, Mouse |
| Purification: affinity purified by Protein A | | |
| Concentration: 1mg/ml | | Predicted MW.: 40 kDa |
| Storage: 0.01M TBS (pH7.4) with 1% BSA, 0.02% Proclin300 and 50% Glycerol. Shipped at 4°C. Store at -20°C for one year. Avoid repeated freeze/thaw cycles. | | Subcellular Location: Cell membrane |
| Background: This gene is a member of the connexin gene family. The encoded protein is a component of gap junctions, which are composed of arrays of intercellular channels that provide a route for the diffusion of low molecular weight materials from cell to cell. Mutations in this gene may be associated with atrial fibrillation. Alternatively spliced transcript variants encoding the same isoform have been described. [provided by RefSeq, Jul 2008] | | |

— VALIDATION IMAGES —

25 ug total protein per lane of various lysates (see on figure) probed with Connexin-40 polyclonal antibody, unconjugated (bs-1050R) at 1:1000 dilution and 4°C overnight incubation. Followed by conjugated secondary antibody incubation at r.t. for 60 min.



Paraformaldehyde-fixed, paraffin embedded Human Lung; Antigen retrieval by boiling in sodium citrate buffer (pH6.0) for 15 min; Antibody incubation with Connexin-40 Polyclonal Antibody, Unconjugated (bs-1050R) at 1:200 overnight at 4°C, followed by conjugation to the bs-0295G-HRP and DAB (C-0010) staining.



Paraformaldehyde-fixed, paraffin embedded Human Heart; Antigen retrieval by boiling in sodium citrate buffer (pH6.0) for 15 min; Antibody incubation with Connexin-40 Polyclonal Antibody, Unconjugated (bs-1050R) at 1:200 overnight at 4°C, followed by conjugation to the bs-0295G-HRP and DAB (C-0010) staining.

— SELECTED CITATIONS —

- **[IF=30.8]** Hu Junyi. et al. Multi-omic profiling of clear cell renal cell carcinoma identifies metabolic reprogramming associated with disease progression. NAT GENET. 2024 Feb;56(3):442-457 IHC ;Human. 38361033
- **[IF=5.9]** Zhao, Jing, et al. "Chronic obstructive sleep apnea causes atrial remodeling in canines: mechanisms and implications." Basic Research in Cardiology 109.5 (2014): 1-13. WB ;="Dog". 25015734
- **[IF=6.3]** Siyu Tao. et al. IP3RPEP6, a novel peptide inhibitor of IP3 receptor channels that does not affect connexin-43 hemichannels. ACTA PHYSIOL. 2024 Jan;;e14086 WB ;Human. 38240350
- **[IF=3.322]** Zhangchi Liu. et al. Pinocembrin alleviates the susceptibility to atrial fibrillation in isoproterenol-induced rats. BIOCHEM BIOPH RES CO. 2022 Dec;636:33 WB ;Rat. 36332480
- **[IF=3.2]** Pei-Long Li. et al. IL-33 facilitates endoplasmic reticulum stress and pyroptosis in LPS-stimulated ARDS model in

Important Note: This product as supplied is intended for research use only, not for use in human, therapeutic or diagnostic applications.

vitro..MOLECULAR IMMUNOLOGY.2025 Mar 20;181:102-112. Western blot,IF ;Human. 40118005