

bs-4834R**[Primary Antibody]****CD73 Rabbit pAb****BioSS**
ANTIBODIES

www.bioss.com.cn

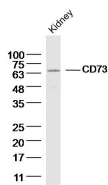
sales@bioss.com.cn

techsupport@bioss.com.cn

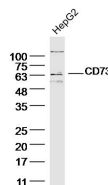
400-901-9800

— DATASHEET —

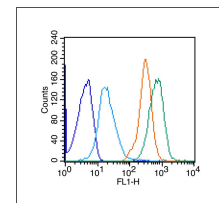
| | | |
|--|----------------------|--|
| Host: Rabbit | Isotype: IgG | Applications: WB (1:500-2000) Flow-Cyt (1µg/Test) |
| Clonality: Polyclonal | | |
| GeneID: 4907 | SWISS: P21589 | Reactivity: Human, Mouse (predicted: Rat, Rabbit, Pig, Sheep, Cow, Dog, GuineaPig) |
| Target: CD73 | | Predicted MW.: 63 kDa |
| Immunogen: KLH conjugated synthetic peptide derived from human CD73/NT5: 151-250/574. | | Subcellular Location: Cell membrane |
| Purification: affinity purified by Protein A | | |
| Concentration: 1mg/ml | | |
| Storage: 0.01M TBS (pH7.4) with 1% BSA, 0.02% Proclin300 and 50% Glycerol. Shipped at 4°C. Store at -20°C for one year. Avoid repeated freeze/thaw cycles. | | |
| Background: The protein encoded by this gene is a plasma membrane protein that catalyzes the conversion of extracellular nucleotides to membrane-permeable nucleosides. The encoded protein is used as a determinant of lymphocyte differentiation. Defects in this gene can lead to the calcification of joints and arteries. Two transcript variants encoding different isoforms have been found for this gene.[provided by RefSeq, Mar 2011] | | |

— VALIDATION IMAGES —

Sample: Kidney (mouse) Lysate at 40 ug
 Primary: Anti- CD73 (bs-4834R) at 1/300 dilution
 Secondary: IRDye800CW Goat Anti-Rabbit IgG at
 1/20000 dilution Predicted band size: 63 kD
 Observed band size: 65 kD



Sample: HepG2 (human) Cell Lysate at 40 ug
 Primary: Anti- CD73 (bs-4834R) at 1/300 dilution
 Secondary: IRDye800CW Goat Anti-Rabbit IgG at
 1/20000 dilution Predicted band size: 63 kD
 Observed band size: 63 kD



Blank control (blue line): Raji (blue). Primary
 Antibody (green line): Rabbit Anti- Phospho-c-
 Fos (Ser32) antibody (bs-4834R) Dilution: 1µg
 /10⁶ cells; Isotype Control Antibody (orange
 line): Rabbit IgG. Secondary Antibody (white
 blue line): Goat anti-rabbit IgG-PE Dilution: 1µg
 /test. Protocol

— SELECTED CITATIONS —

- **[IF=13.3]** Yongzhi Cui. et al. Bone-Targeted Biomimetic Nanogels Re-Establish Osteoblast/Osteoclast Balance to Treat Postmenopausal Osteoporosis. *SMALL*. 2023 Oct;;2303494 FCM ;Mouse. 37794621
- **[IF=10.761]** Minji Choi. et al. Effect of Co-culture of mesenchymal stem cell and glomerulus endothelial cell to promote endothelialization under optimized perfusion flow rate in whole renal ECM scaffold. *MATER TODAY BIO*. 2022 Dec;17:100464 IF ;Rat. 36325425
- **[IF=9.776]** Ruijing Zhao. et al. Inhalation of MSC-EVs is a noninvasive strategy for ameliorating acute lung injury. *J Control Release*. 2022 May;345:214 FCM ;Human. 35307508
- **[IF=6.832]** Wei-Cheng Tseng. et al. Hypoxic mesenchymal stem cells ameliorate acute kidney ischemia-reperfusion injury via enhancing renal tubular autophagy. *Stem Cell Res Ther*. 2021 Dec;12(1):1-22 FCM ;Rat. 34183058
- **[IF=7.1]** Prasanna Weeratunga. et al. Footprint-free induced pluripotent stem cells can be successfully differentiated

Important Note: This product as supplied is intended for research use only, not for use in human, therapeutic or diagnostic applications.

into mesenchymal stromal cells in the feline model. STEM CELL RES THER. 2025 Apr;16:195 IF ;Feline. 40254569