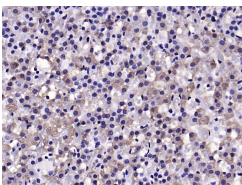


---

## HSL/LIPE Rabbit pAb

Catalog Number: bs-22905R  
Target Protein: HSL/LIPE  
Concentration: 1mg/ml  
Form: Liquid  
Host: Rabbit  
Clonality: Polyclonal  
Isotype: IgG  
Applications: IHC-P (1:400-800), IHC-F (1:400-800), IF (1:100-500)  
Reactivity: Rat (predicted:Human, Mouse, Pig, Sheep, Cow)  
Predicted MW: 116 kDa  
Entrez Gene: 3991  
Swiss Prot: Q05469  
Source: KLH conjugated synthetic peptide derived from human HSL/LIPE : 441-540/1076.  
Purification: affinity purified by Protein A  
Storage: 0.01M TBS (pH7.4) with 1% BSA, 0.02% Proclin300 and 50% Glycerol.  
Shipped at 4°C. Store at -20°C for one year. Avoid repeated freeze/thaw cycles.  
Background: HSL/LIPE is found in adipose tissue and heart, where it primarily hydrolyzes stored triglycerides to free fatty acids. It is also found in steroidogenic tissues, where it principally converts cholesteryl esters to free cholesterol for steroid hormone production. There are two named isoforms.

### VALIDATION IMAGES



Paraformaldehyde-fixed, paraffin embedded (rat adrenal gland); Antigen retrieval by boiling in sodium citrate buffer (pH6.0) for 15min; Block endogenous peroxidase by 3% hydrogen peroxide for 20 minutes; Blocking buffer (normal goat serum) at 37°C for 30min; Antibody incubation with (HSL) Polyclonal Antibody, Unconjugated (bs-22905R) at 1:200 overnight at 4°C, followed by operating according to SP Kit(Rabbit) (sp-0023) instructions and DAB staining.