

bs-22106R**[Primary Antibody]****MAGEA11 Rabbit pAb****Bioss**
ANTIBODIES

www.bioss.com.cn

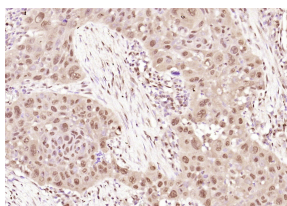
sales@bioss.com.cn

techsupport@bioss.com.cn

400-901-9800

— DATASHEET —

Host: Rabbit	Isotype: IgG	Applications: IHC-P (1:100-500)
Clonality: Polyclonal		IHC-F (1:100-500)
GeneID: 4110	SWISS: P43364	IF (1:100-500)
Target: MAGEA11		Reactivity: Human
Immunogen: KLH conjugated synthetic peptide derived from human MAGEA11 : 361-429/429.		
Purification: affinity purified by Protein A		Predicted MW.: 48 kDa
Concentration: 1mg/ml		Subcellular Location: Cytoplasm ,Nucleus
Storage: 0.01M TBS (pH7.4) with 1% BSA, 0.02% Proclin300 and 50% Glycerol. Shipped at 4°C. Store at -20°C for one year. Avoid repeated freeze/thaw cycles.		
Background: MAGEA11 (Melanoma antigen family A, 11) is a member of the MAGEA gene family. MAGEA proteins are expressed in melanomas and other cancers. MAGEA11 acts as androgen receptor co-regulator increasing androgen receptor activity by modulating the receptors interdomain interaction.		

— VALIDATION IMAGES —

Paraformaldehyde-fixed, paraffin embedded (human laryngeal carcinoma); Antigen retrieval by boiling in sodium citrate buffer (pH6.0) for 15min; Block endogenous peroxidase by 3% hydrogen peroxide for 20 minutes; Blocking buffer (normal goat serum) at 37°C for 30min; Antibody incubation with (MAGEA11) Polyclonal Antibody, Unconjugated (bs-22106R) at 1:400 overnight at 4°C, followed by operating according to SP Kit(Rabbit) (sp-0023) instructions and DAB staining.