

**bs-22901R****[ Primary Antibody ]****IL-4R Rabbit pAb****BioSS**  
**ANTIBODIES**

www.bioss.com.cn

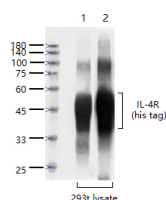
sales@bioss.com.cn

techsupport@bioss.com.cn

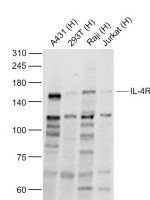
400-901-9800

**— DATASHEET —**

<b>Host:</b> Rabbit <b>Clonality:</b> Polyclonal <b>GeneID:</b> 3566 <b>Target:</b> IL-4R <b>Immunogen:</b> KLH conjugated synthetic peptide derived from human IL-4R: 71-170/825. < Extracellular > <b>Purification:</b> affinity purified by Protein A <b>Concentration:</b> 1mg/ml <b>Storage:</b> 0.01M TBS (pH7.4) with 1% BSA, 0.02% Proclin300 and 50% Glycerol. Shipped at 4°C. Store at -20°C for one year. Avoid repeated freeze/thaw cycles. <b>Background:</b> This gene encodes the alpha chain of the interleukin-4 receptor, a type I transmembrane protein that can bind interleukin4 and interleukin 13 to regulate IgE production. The encoded protein also can bind interleukin 4 to promote differentiation of Th2 cells. A soluble form of the encoded protein can be produced by an alternate splice variant or by proteolysis of the membrane-bound protein, and this soluble form can inhibit IL4-mediated cell proliferation and IL5 upregulation by T-cells. Allelic variations in this gene have been associated with atopy, a condition that can manifest itself as allergic rhinitis, sinusitis, asthma, or eczema. Two transcript variants encoding different isoforms, a membrane-bound and a soluble form, have been found for this gene. [provided by RefSeq, Jul 2008].	<b>Isotype:</b> IgG <b>SWISS:</b> P24394 <b>Applications:</b> WB (1:500-2000) <b>Reactivity:</b> Human (predicted: protein)  <b>Predicted MW.:</b> 88 kDa <b>Subcellular Location:</b> Secreted ,Cell membrane
--	--

**— VALIDATION IMAGES —**

Sample: Lane 1: IL-4R-His protein (1-232)  
Overexpression 293T (Human) Cell Lysate at 4 ug  
Lane 2: IL-4R-His protein (1-232) Overexpression  
293T (Human) Cell Lysate at 4 ug Primary: Lane  
1: Anti-IL-4R (bs-22901R) at 1/1000 dilution Lane  
2: Anti-His tag (bsm-33004M) at 1/1000 dilution  
Secondary: Lane 1: IRDye800CW Goat Anti-  
Rabbit IgG at 1/20000 dilution Lane 2:  
IRDye800CW Goat Anti-Mouse IgG at 1/20000  
dilution Predicted band size: 43-48 kD Observed  
band size: 43-48 kD



Sample: Lane 1: A431 (Human) Cell Lysate at 30  
ug Lane 2: 293T (Human) Cell Lysate at 30 ug  
Lane 3: Raji (Human) Cell Lysate at 30 ug Lane 4:  
Jurkat (Human) Cell Lysate at 30 ug Primary:  
Anti-IL-4R (bs-22901R) at 1/1000 dilution  
Secondary: IRDye800CW Goat Anti-Rabbit IgG at  
1/20000 dilution Predicted band size: 140-160 kD  
Observed band size: 150 kD