

---

## human CD29 Mouse mAb

Catalog Number: bsm-30026M

Target Protein: human CD29

Concentration: 1mg/ml

Form: Size : 100ug

Liquid

Size : 200ug (PBS only)

Lyophilized

Note: Centrifuge tubes before opening. Reconstitute the lyophilized product in distilled water. Optimal concentration should be determined by the end user.

Host: Mouse

Clonality: Monoclonal

Clone No.: 9H1

Isotype: Mouse IgG1, k

Applications: Flow-Cyt (1ug/Test)

Reactivity: Human

Predicted MW: 88 kDa

Detected MW: 130 kDa

Entrez Gene: 3688

Swiss Prot: P05556

Purification: affinity purified by Protein G

Storage: Size : 100ug

0.01M TBS (pH7.4).

Size : 200ug (PBS only)

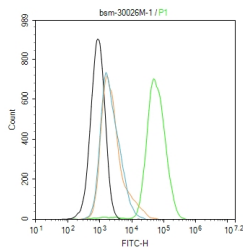
0.01M PBS

Shipped at 4°C. Store at -20°C for one year. Avoid repeated freeze/thaw cycles.

**Background:** Integrins alpha-1/beta-1, alpha-2/beta-1, alpha-10/beta-1 and alpha-11/beta-1 are receptors for collagen. Integrins alpha-1/beta-1 and alpha-2/beta-2 recognize the proline-hydroxylated sequence G-F-P-G-E-R in collagen. Integrins alpha-2/beta-1, alpha-3/beta-1, alpha-4/beta-1, alpha-5/beta-1, alpha-8/beta-1, alpha-10/beta-1, alpha-11/beta-1 and alpha-V/beta-1 are receptors for fibronectin. Alpha-4/beta-1 recognizes one or more domains within the alternatively spliced CS-1 and CS-5 regions of fibronectin. Integrin alpha-5/beta-1 is a receptor for fibrinogen. Integrin alpha-1/beta-1, alpha-2/beta-1, alpha-6/beta-1 and alpha-7/beta-1 are receptors for laminin. Integrin alpha-4/beta-1 is a

receptor for VCAM1. It recognizes the sequence Q-I-D-S in VCAM1. Integrin alpha-9/beta-1 is a receptor for VCAM1, cytotactin and osteopontin. It recognizes the sequence A-E-I-D-G-I-E-L in cytotactin. Integrin alpha-3/beta-1 is a receptor for epiligrin, thrombospondin and CSPG4. Alpha-3/beta-1 may mediate with LGALS3 the stimulation by CSPG4 of endothelial cells migration. Integrin alpha-V/beta-1 is a receptor for vitronectin. Beta-1 integrins recognize the sequence R-G-D in a wide array of ligands. Isoform beta-1B interferes with isoform beta-1A resulting in a dominant negative effect on cell adhesion and migration (in vitro). In case of HIV-1 infection, the interaction with extracellular viral Tat protein seems to enhance angiogenesis in Kaposi's sarcoma lesions.

## VALIDATION IMAGES



Blank control:U87MG. Primary Antibody (green line): Mouse Anti-human CD29 antibody (bsm-30026M) Dilution: 1ug/Test; Secondary Antibody (white blue line) : Goat anti-mouse IgG-FITC Dilution: 0.5ug/Test. Isotype control (orange line) : Normal Rabbit IgG Protocol The cells were incubated in 5%BSA to block non-specific protein-protein interactions for 30 min at room temperature .Cells stained with Primary Antibody for 30 min at room temperature. The secondary antibody used for 40 min at room temperature. Acquisition of 20,000 events was performed.

## PRODUCT SPECIFIC PUBLICATIONS

**[IF=9.4]** Yongli Gao. et al. Collagen-based hydrogels induce hyaline cartilage regeneration by immunomodulation and homeostasis maintenance. ACTA BIOMATER. 2024 Jul;: IF ; Rabbit . 39067644