

bs-8328R**[Primary Antibody]****PP4R3B Rabbit pAb****Bioss**
ANTIBODIES

www.bioss.com.cn

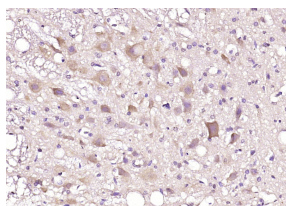
sales@bioss.com.cn

techsupport@bioss.com.cn

400-901-9800

— DATASHEET —

Host: Rabbit	Isotype: IgG	Applications: IHC-P (1:100-500) IHC-F (1:100-500) IF (1:50-200) Reactivity: Rat (predicted: Human, Mouse, Rabbit, Pig, Sheep, Cow, Chicken, Dog, Horse) Predicted MW.: 97 kDa Subcellular Location: Cytoplasm ,Nucleus
Clonality: Polyclonal		
GeneID: 57223	SWISS: Q5MIZ7	
Target: PP4R3B		
Immunogen: KLH conjugated synthetic peptide derived from human SMEK2/PP4R3B: 701-800/849.		
Purification: affinity purified by Protein A		
Concentration: 1mg/ml		
Storage: 0.01M TBS (pH7.4) with 1% BSA, 0.02% Proclin300 and 50% Glycerol. Shipped at 4°C. Store at -20°C for one year. Avoid repeated freeze/thaw cycles.		
Background: SMEK2 contains a WH1 domain. There are five named isoforms produced by alternative splicing. Mapping of a diet-induced hypercholesterolemia locus (Dihc2) in rats identified SMEK2 as a strong candidate for responsiveness to dietary cholesterol.		

— VALIDATION IMAGES —

Paraformaldehyde-fixed, paraffin embedded (rat brain); Antigen retrieval by boiling in sodium citrate buffer (pH6.0) for 15min; Block endogenous peroxidase by 3% hydrogen peroxide for 20 minutes; Blocking buffer (normal goat serum) at 37°C for 30min; Antibody incubation with (PP4R3B) Polyclonal Antibody, Unconjugated (bs-8328R) at 1:200 overnight at 4°C, followed by operating according to SP Kit(Rabbit) (sp-0023) instructions and DAB staining.