

**bsm-1626M****[ Primary Antibody ]****Bioss**  
ANTIBODIES

www.bioss.com.cn

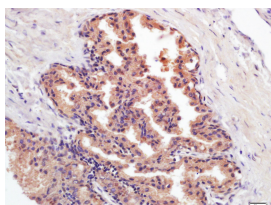
sales@bioss.com.cn

techsupport@bioss.com.cn

400-901-9800

**PSA (PA5) Mouse mAb****— DATASHEET —**

<b>Host:</b> Mouse	<b>Isotype:</b> IgG	<b>Applications:</b> WB (1:500-2000) <b>IHC-P</b> (1:100-500) <b>IHC-F</b> (1:100-500) <b>IF</b> (1:100-500) <b>ELISA</b> (1:5000-10000)  <b>Reactivity:</b> Human   <b>Predicted MW.:</b> 23 kDa  <b>Subcellular Location:</b> Secreted
<b>Clonality:</b> Monoclonal	<b>CloneNo.:</b> PA5	
<b>GeneID:</b> 354	<b>SWISS:</b> P07288	
<b>Target:</b> PSA (PA5)		
<b>Immunogen:</b> Full length native protein purified from human: full length.		
<b>Purification:</b> affinity purified by Protein A		
<b>Concentration:</b> 1mg/ml		
<b>Storage:</b> 0.01M PBS (pH7.4) with 0.02% Proclin300. Shipped at 4°C. Store at -20°C for one year. Avoid repeated freeze/thaw cycles.		
<b>Background:</b> Kallikreins are a subgroup of serine proteases having diverse physiological functions. Growing evidence suggests that many kallikreins are implicated in carcinogenesis and some have potential as novel cancer and other disease biomarkers. This gene is one of the fifteen kallikrein subfamily members located in a cluster on chromosome 19. Its protein product is a protease present in seminal plasma. It is thought to function normally in the liquefaction of seminal coagulum, presumably by hydrolysis of the high molecular mass seminal vesicle protein. Serum level of this protein, called PSA in the clinical setting, is useful in the diagnosis and monitoring of prostatic carcinoma. Alternate splicing of this gene generates several transcript variants encoding different isoforms. [provided by RefSeq, Jul 2008].		

**— VALIDATION IMAGES —**

Tissue/cell: human prostate carcinoma; 4%  
 Paraformaldehyde-fixed and paraffin-embedded; Antigen retrieval: citrate buffer (0.01M, pH 6.0), Boiling bathing for 15min; Block endogenous peroxidase by 3% Hydrogen peroxide for 30min; Blocking buffer (normal goat serum, C-0005) at 37°C for 20 min; Incubation: Anti-PSA(PA5) Polyclonal Antibody, Unconjugated (bsm-1626M) 1:200, overnight at 4°C, followed by conjugation to the secondary antibody (SP-0024) and DAB (C-0010) staining

**— SELECTED CITATIONS —**

- **[IF=6.14]** Yuting Gao. et al. Carbon Dot-Encapsulated Plasmonic Core-Satellite Nanoprobes for Sensitive Detection of Cancer Biomarkers via Dual-Mode Colorimetric and Fluorometric Immunoassay. ACS APPL NANO MATER. 2022;XXXX(XXX):XXX-XXX Other ;Human. 10.1021/acsanm.2c02554
- **[IF=4.04]** Zhou, Jie, et al. "Spectrum-based and color-selective electrochemiluminescence immunoassay for determining human prostate specific antigen in near-infrared region." Talanta 165 (2017): 117-121. Other ;="Human".

Important Note: This product as supplied is intended for research use only, not for use in human, therapeutic or diagnostic applications.

28153230

- **[IF=2.33]** Zhu, Jian-guo, et al. "Expression of SOCSs in human prostate cancer and their association in prognosis." Molecular and cellular biochemistry (2013): 1-9. Other ;="Human". 23666742