

**bs-1703R****[ Primary Antibody ]****BioSS**  
ANTIBODIES

www.bioss.com.cn

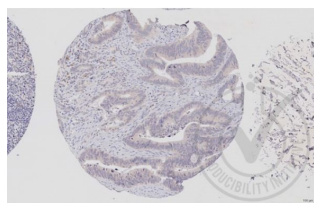
sales@bioss.com.cn

techsupport@bioss.com.cn

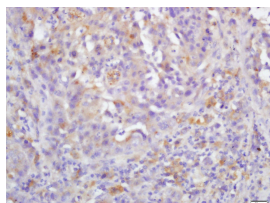
400-901-9800

**RAF1 Rabbit pAb****— DATASHEET —**

<b>Host:</b> Rabbit <b>Clonality:</b> Polyclonal <b>GeneID:</b> 5894 <b>Target:</b> RAF1 <b>Immunogen:</b> KLH conjugated synthetic peptide derived from human RAF1: 31-130/648. <b>Purification:</b> affinity purified by Protein A <b>Concentration:</b> 1mg/ml <b>Storage:</b> 0.01M TBS (pH7.4) with 1% BSA, 0.02% Proclin300 and 50% Glycerol. Shipped at 4°C. Store at -20°C for one year. Avoid repeated freeze/thaw cycles. <b>Background:</b> The Raf family of serine/threonine specific kinases is comprised of three members (aRaf, bRaf, and cRaf) that play a critical role in regulating cell growth and differentiation, and couple growth factor receptor stimulation to nuclear transcription factors via the Ras/mitogen activated protein kinase (MAPK) pathway. cRaf kinase (also known as Raf1) is a small GTPase like kinase of 73 kDa, and is a signal transducer of multiple extracellular stimuli that is regulated by several pathways, and that once activated, phosphorylates MEK which in turn phosphorylates ERK. Raf1 is involved in the transduction of mitogenic signals from the cell membrane to the nucleus. It is part of the Ras dependent signaling pathway from receptors to the nucleus.	<b>Isotype:</b> IgG <b>SWISS:</b> P04049	<b>Applications:</b> IHC-P (1:100-500) IHC-F (1:100-500) IF (1:100-500) <b>Reactivity:</b> Human (predicted: Mouse, Rat, Rabbit, Cow, Dog, Horse) <b>Predicted MW.:</b> 73 kDa <b>Subcellular Location:</b> Cell membrane ,Cytoplasm ,Nucleus
---	---	--

**— VALIDATION IMAGES —**

Images provided the Independent Validation Program (badge number 29651) Formalin-fixed and paraffin embedded human colon labeled with Rabbit Anti-c-Raf/Raf1 Polyclonal Antibody (bs-1703R) at 1:250 overnight at room temperature followed by conjugation to secondary antibody.



Tissue/cell: human gastric carcinoma; 4% Paraformaldehyde-fixed and paraffin-embedded; Antigen retrieval: citrate buffer (0.01M, pH 6.0 ), Boiling bathing for 15min; Block endogenous peroxidase by 3% Hydrogen peroxide for 30min; Blocking buffer (normal goat serum,C-0005) at 37°C for 20 min; Incubation: Anti-Raf1 Polyclonal Antibody, Unconjugated(bs-1703R) 1:200, overnight at 4°C, followed by conjugation to the secondary antibody(SP-0023) and DAB(C-0010) staining

**— SELECTED CITATIONS —**

- **[IF=4.427]** Zhang J et al. Silica nanoparticles induce abnormal mitosis and apoptosis via PKC-δ mediated negative signaling pathway in GC-2 cells of mice. Chemosphere,2018 208, 942–950. WB ;Mouse. 10.1016/j.chemosphere.2018.05.178
- **[IF=3.33]** Wang, Jianping, et al. "Bone Marrow Mononuclear Cell Transplantation Promotes Therapeutic Angiogenesis via Upregulation of the VEGF-VEGFR2 Signaling Pathway in a Rat Model of Vascular Dementia." Behavioural Brain Research

Important Note: This product as supplied is intended for research use only, not for use in human, therapeutic or diagnostic applications.

(2014). WB ;="Rat". 24589546

- **[IF=2.823]** Peng - fei Zhang. et al. Integrated analysis of phosphoproteome and ubiquitylome in epididymal sperm of buffalo (*Bubalus bubalis*). Mol Reprod Dev. 2021 Jan;88(1):15-33 IF ;Bovine. 33140506