

**bsm-1621M****[ Primary Antibody ]****AFP(A2) Mouse mAb****BioSS**  
**ANTIBODIES**

www.bioss.com.cn

sales@bioss.com.cn

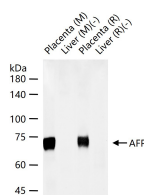
techsupport@bioss.com.cn

400-901-9800

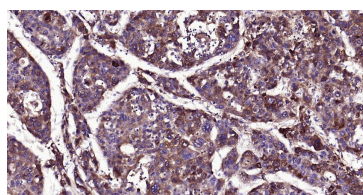
**— DATASHEET —****Host:** Mouse**Isotype:** IgG**Clonality:** Monoclonal**CloneNo.:** A2**Target:** AFP(A2)**Immunogen:** AFP protein: full length.**Purification:** affinity purified by Protein G**Concentration:** 1mg/ml

**Storage:** Size : 50ul/100ul/200ul  
 0.01M PBS (pH7.4) with 0.02% Proclin300.  
 Size : 200ug (PBS only)  
 0.01M PBS  
 Shipped at 4°C. Store at -20°C for one year. Avoid repeated freeze/thaw cycles.

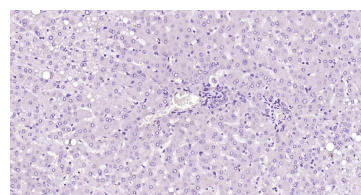
**Background:** Alpha 1 Fetoprotein is a major plasma protein produced by the yolk sac and the liver during fetal life. Alpha fetoprotein expression in adults is often associated with hepatoma or teratoma. However, hereditary persistence of alpha-fetoprotein may also be found in individuals with no obvious pathology. The protein is thought to be the fetal counterpart of serum albumin, and the alpha fetoprotein and albumin genes are present in tandem in the same transcriptional orientation on chromosome 4. Alpha fetoprotein is found in monomeric as well as dimeric and trimeric forms, and binds copper, nickel, fatty acids and bilirubin. The level of alpha fetoprotein in amniotic fluid is used to measure renal loss of protein to screen for spina bifida and anencephaly. Expression has been documented in human adrenal, liver, ovary, testis, and pancreas. ESTs have been isolated from normal human brain, liver/spleen, embryo and uterus tissue libraries.

**Applications:** **WB** (1:500-2000)**IHC-P** (1:100-500)**IHC-F** (1:100-500)**IF** (1:100-500)**ELISA** (1:5000-10000)**Reactivity:** Human, Mouse, Rat**Predicted MW.:** 65 kDa**Subcellular Location:** Secreted**— VALIDATION IMAGES —**

25 ug total protein per lane of various lysates (see on figure) probed with AFP(A2) monoclonal antibody, unconjugated (bsm-1621M) at 1:1000 dilution and 4°C overnight incubation. Followed by conjugated secondary antibody incubation at r.t. for 60 min.



Paraformaldehyde-fixed, paraffin embedded Human Liver Cancer; Antigen retrieval by boiling in sodium citrate buffer (pH6.0) for 15 min; Antibody incubation with AFP(A2) Monoclonal Antibody, Unconjugated (bsm-1621M) at 1:200 overnight at 4°C, followed by conjugation to the bs-40296G-HRP and DAB (C-0010) staining.



(Negative control) Paraformaldehyde-fixed, paraffin embedded Human Liver; Antigen retrieval by boiling in sodium citrate buffer (pH6.0) for 15 min; Antibody incubation with AFP(A2) Monoclonal Antibody, Unconjugated (bsm-1621M) at 1:500 overnight at 4°C, followed by conjugation to the bs-40296G-HRP and DAB (C-0010) staining.

**— SELECTED CITATIONS —**

- **[IF=10.7]** Cheng Zheng. et al. Universal sulfatase-based chemiluminescence biosensing platform: Validation via AFP detection in clinical blood samples. BIOSSENS BIOELECTRON. 2025 Jan;267:116771 ELISA ;Human. 39265427
- **[IF=10.05]** Aoxiang Xiao. et al. Ultrasensitive Detection and Cellular Photothermal Therapy via a Self-Photothermal Modulation Biosensor. ADV OPT MATER. 2023 Jan;;2202711 Other ;Rat. 10.1002/adom.202202711
- **[IF=7.48]** Zong, Chen, et al. "Multilayer hemin/G-quadruplex wrapped gold nanoparticles as tag for ultrasensitive

Important Note: This product as supplied is intended for research use only, not for use in human, therapeutic or diagnostic applications.

multiplex immunoassay by chemiluminescence imaging." Biosensors and Bioelectronics 43 (2013): 372-378. ELISA ;="". 23356995

- **[IF=5.83]** Zong, Chen, et al. "Chemiluminescence imaging immunoassay of multiple tumor markers for cancer screening." Analytical Chemistry 84.5 (2012): 2410-2415. Other ;="Human". 22320247
- **[IF=6.45]** Lin, Dajie, et al. "Cascade signal amplification for electrochemical immunosensing by integrating biobarcode probes, surface-initiated enzymatic polymerization and silver nanoparticle deposition." Biosensors and Bioelectronics (2014). Other ;="". 25460899