

bs-18067R**[Primary Antibody]****BioSS**
ANTIBODIES

www.bioss.com.cn

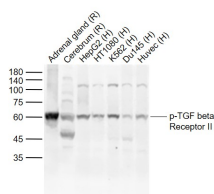
sales@bioss.com.cn

techsupport@bioss.com.cn

400-901-9800

phospho-TGF beta Receptor II (Ser225) Rabbit pAb**— DATASHEET —**

Host: Rabbit	Isotype: IgG	Applications: WB (1:500-2000)
Clonality: Polyclonal		Reactivity: Human, Rat (predicted: Mouse)
GeneID: 7048	SWISS: P37173	
Target: phospho-TGF beta Receptor II (Ser225)		Predicted MW.: 62 kDa
Immunogen: KLH conjugated synthesised phosphopeptide derived from human TGF beta Receptor II around the phosphorylation site of Ser225: DR(p-S)DI.		Subcellular Location: Cell membrane
Purification: affinity purified by Protein A		
Concentration: 1mg/ml		
Storage: 0.01M TBS (pH7.4) with 1% BSA, 0.02% Proclin300 and 50% Glycerol. Shipped at 4°C. Store at -20°C for one year. Avoid repeated freeze/thaw cycles.		
Background: This gene encodes a member of the Ser/Thr protein kinase family and the TGFβ receptor subfamily. The encoded protein is a transmembrane protein that has a protein kinase domain, forms a heterodimeric complex with another receptor protein, and binds TGF-β. This receptor/ligand complex phosphorylates proteins, which then enter the nucleus and regulate the transcription of a subset of genes related to cell proliferation. Mutations in this gene have been associated with Marfan Syndrome, Loeys-Deitz Aortic Aneurysm Syndrome, and the development of various types of tumors. Alternatively spliced transcript variants encoding different isoforms have been characterized.		

— VALIDATION IMAGES —

Sample: Lane 1: Rat Adrenal gland tissue lysates
 Lane 2: Rat Cerebrum tissue lysates Lane 3:
 Human HepG2 cell lysates Lane 4: Human
 HT1080 cell lysates Lane 5: Human K562 cell
 lysates Lane 6: Human Du145 cell lysates Lane 7:
 Human Huvec cell lysates Primary: Anti-
 phospho-TGF beta Receptor II (Ser225)
 (bs-18067R) at 1/1000 dilution Secondary:
 IRDye800CW Goat Anti-Rabbit IgG at 1/20000
 dilution Predicted band size: 62 kD Observed
 band size: 60 kD