

bs-18064R**[Primary Antibody]****BioSS**
ANTIBODIES

www.bioss.com.cn

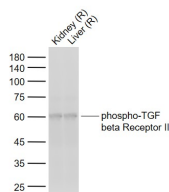
sales@bioss.com.cn

techsupport@bioss.com.cn

400-901-9800

phospho-TGF beta Receptor II (Tyr336) Rabbit pAb**— DATASHEET —**

Host: Rabbit	Isotype: IgG	Applications: WB (1:500-2000)
Clonality: Polyclonal		
GeneID: 7048	SWISS: P37173	
Target: phospho-TGF beta Receptor II (Tyr336)		
Immunogen: KLH conjugated synthesised phosphopeptide derived from human TGF beta Receptor II around the phosphorylation site of Tyr336: QE(p-Y)LT.		
Purification: affinity purified by Protein A		Reactivity: Rat (predicted: Human, Mouse)
Concentration: 1mg/ml		
Storage: 0.01M TBS (pH7.4) with 1% BSA, 0.02% Proclin300 and 50% Glycerol. Shipped at 4°C. Store at -20°C for one year. Avoid repeated freeze/thaw cycles.		Predicted MW.: 62 kDa
Background: This gene encodes a member of the Ser/Thr protein kinase family and the TGFβ receptor subfamily. The encoded protein is a transmembrane protein that has a protein kinase domain, forms a heterodimeric complex with another receptor protein, and binds TGF-β. This receptor/ligand complex phosphorylates proteins, which then enter the nucleus and regulate the transcription of a subset of genes related to cell proliferation. Mutations in this gene have been associated with Marfan Syndrome, Loeys-Deitz Aortic Aneurysm Syndrome, and the development of various types of tumors. Alternatively spliced transcript variants encoding different isoforms have been characterized.		Subcellular Location: Cell membrane

— VALIDATION IMAGES —

Sample: Lane 1: Rat Kidney tissue lysates Lane 2:

Rat Liver tissue lysates Primary: Anti-phospho-

TGF beta Receptor II (Tyr336) (bs-18064R) at

1/200 dilution Secondary: IRDye800CW Goat

Anti-Rabbit IgG at 1/20000 dilution Predicted

band size: 62 kD Observed band size: 60 kD