

bs-18062R**[Primary Antibody]****HNF6 Rabbit pAb****BioSS**
ANTIBODIES

www.bioss.com.cn

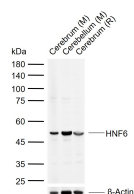
sales@bioss.com.cn

techsupport@bioss.com.cn

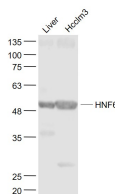
400-901-9800

— DATASHEET —

Host: Rabbit	Isotype: IgG	Applications: WB (1:500-2000)
Clonality: Polyclonal		Reactivity: Human, Mouse, Rat (predicted: Sheep, Cow, Dog, Horse)
GeneID: 3175	SWISS: Q9UBC0	Predicted MW.: 51 kDa
Target: HNF6		Subcellular Location: Nucleus
Immunogen: KLH conjugated synthetic peptide derived from human HNF6: 351-465/465.		
Purification: affinity purified by Protein A		
Concentration: 1mg/ml		
Storage: 0.01M TBS (pH7.4) with 1% BSA, 0.02% Proclin300 and 50% Glycerol. Shipped at 4°C. Store at -20°C for one year. Avoid repeated freeze/thaw cycles.		
Background: This gene encodes a member of the Cut homeobox family of transcription factors. Expression of the encoded protein is enriched in the liver, where it stimulates transcription of liver-expressed genes, and antagonizes glucocorticoid-stimulated gene transcription. This gene may influence a variety of cellular processes including glucose metabolism, cell cycle regulation, and it may also be associated with cancer. Alternative splicing results in multiple transcript variants. [provided by RefSeq, Dec 2012]		

— VALIDATION IMAGES —

Sample: Lane 1: Mouse Cerebrum tissue lysates
 Lane 2: Mouse Cerebellum tissue lysates Lane 3:
 Rat Cerebrum tissue lysates Primary: Anti-HNF6
 (bs-18062R) at 1/1000 dilution Secondary:
 IRDye800CW Goat Anti-Rabbit IgG at 1/20000
 dilution Predicted band size: 51 kDa Observed
 band size: 51 kDa



Sample: Liver (Rat) Lysate at 40 ug
 Hcclm3(Human) Cell Lysate at 30 ug Primary:
 Anti- HNF6 (bs-18062R) at 1/1000 dilution
 Secondary: IRDye800CW Goat Anti-Rabbit IgG at
 1/20000 dilution Predicted band size: 51 kD
 Observed band size: 51 kD