

bs-18059R**[Primary Antibody]****HMX1 Rabbit pAb****Bioss**
ANTIBODIES

www.bioss.com.cn

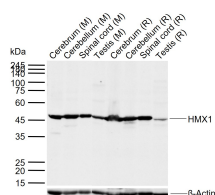
sales@bioss.com.cn

techsupport@bioss.com.cn

400-901-9800

— DATASHEET —

Host: Rabbit	Isotype: IgG	Applications: WB (1:500-2000)
Clonality: Polyclonal		
GeneID: 3166	SWISS: Q9NP08	
Target: HMX1		
Immunogen: KLH conjugated synthetic peptide derived from human HMX1: 181-280/348.		
Purification: affinity purified by Protein A		Reactivity: Mouse, Rat (predicted: Human, Pig, Cow, Dog)
Concentration: 1mg/ml		
Storage: 0.01M TBS (pH7.4) with 1% BSA, 0.02% Proclin300 and 50% Glycerol. Shipped at 4°C. Store at -20°C for one year. Avoid repeated freeze/thaw cycles.		
Background: This gene encodes a transcription factor that belongs to the H6 family of homeobox proteins. This protein can bind a 5'-CAAG-3' core DNA sequence, and it is involved in the development of craniofacial structures. Mutations in this gene cause oculoauricular syndrome, a disorder of the eye and external ear. [provided by RefSeq, Oct 2009]		
		Predicted MW.: 36 kDa
		Subcellular Location: Cell membrane

— VALIDATION IMAGES —

Sample: Lane 1: Mouse Cerebrum tissue lysates
 Lane 2: Mouse Cerebellum tissue lysates Lane 3:
 Mouse Spinal cord tissue lysates Lane 4: Mouse
 Testis tissue lysates Lane 5: Rat Cerebrum tissue
 lysates Lane 6: Rat Cerebellum tissue lysates
 Lane 7: Rat Spinal cord tissue lysates Lane 8: Rat
 Testis tissue lysates Primary: Anti-HMX1
 (bs-18059R) at 1/1000 dilution Secondary:
 IRDye800CW Goat Anti-Rabbit IgG at 1/20000
 dilution Predicted band size: 36 kDa Observed
 band size: 48 kDa