

bs-16183R**[Primary Antibody]****FRY/C13orf14 Rabbit pAb****Bioss**
ANTIBODIES

www.bioss.com.cn

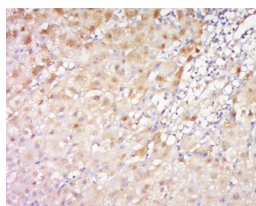
sales@bioss.com.cn

techsupport@bioss.com.cn

400-901-9800

— DATASHEET —

Host: Rabbit	Isotype: IgG	Applications: IHC-P (1:100-500) IHC-F (1:100-500) IF (1:100-500)
Clonality: Polyclonal		
GeneID: 10129	SWISS: Q5TBA9	
Target: FRY/C13orf14		Reactivity: Human (predicted: Mouse, Rat, Sheep, Cow, Chicken, Dog)
Immunogen: KLH conjugated synthetic peptide derived from human FRY/C13orf14: 101-200/3013.		
Purification: affinity purified by Protein A		Predicted MW.: 339 kDa
Concentration: 1mg/ml		Subcellular Location: Cytoplasm
Storage: 0.01M TBS (pH7.4) with 1% BSA, 0.02% Proclin300 and 50% Glycerol. Shipped at 4°C. Store at -20°C for one year. Avoid repeated freeze/thaw cycles.		
Background: In yeast, flies, and worms, the Dbf2-related (Ndr) kinase protein family functions in various aspects of cell polarity and morphogenesis. The Drosophila melanogaster protein, furry, is responsible for maintaining integrity of polarized cell extensions, such as epidermal hair cells, lateral extensions of the arista and the shafts of neuronal sensory bristles. Mutations in furry lead to the formation of branched arista laterals, bristles and hairs. The yeast homolog of furry, Mor2, is important for the localization of F-actin specifically at the cell ends and is required for the restriction of the growth zones. The mammalian homolog of the Drosophila furry protein is FRY, also known as C13orf14, a 3,013 amino acid protein that probably functions as a transcription factor for genes that regulate the actin cytoskeleton. The gene encoding FRY maps to chromosome 13, which comprises nearly 4% of human DNA and contains around 114 million base pairs and 400 genes.		

— VALIDATION IMAGES —

Tissue/cell: human hepatocellular carcinoma;
4% Paraformaldehyde-fixed and paraffin-embedded; Antigen retrieval: citrate buffer (0.01M, pH 6.0), Boiling bathing for 15min; Block endogenous peroxidase by 3% Hydrogen peroxide for 30min; Blocking buffer (normal goat serum, C-0005) at 37°C for 20 min; Incubation: Anti-FRY/C13orf14 Polyclonal Antibody, Unconjugated (bs-16183R) 1:500, overnight at 4°C, followed by conjugation to the secondary antibody (SP-0023) and DAB (C-0010) staining