

bs-16181R**[Primary Antibody]****FRRS1 Rabbit pAb****BioSS**
ANTIBODIES

www.bioss.com.cn

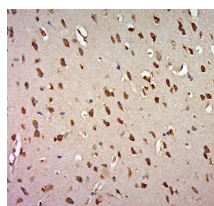
sales@bioss.com.cn

techsupport@bioss.com.cn

400-901-9800

— DATASHEET —

Host: Rabbit	Isotype: IgG	Applications: IHC-P (1:100-500) IHC-F (1:100-500) IF (1:100-500) Reactivity: Mouse (predicted: Human, Rat, Sheep, Cow) Predicted MW.: 66 kDa Subcellular Location: Cell membrane
Clonality: Polyclonal		
GeneID: 391059	SWISS: Q6ZNA5	
Target: FRRS1		
Immunogen: KLH conjugated synthetic peptide derived from human FRRS1: 301-400/592.		
Purification: affinity purified by Protein A		
Concentration: 1mg/ml		
Storage: 0.01M TBS (pH7.4) with 1% BSA, 0.02% Proclin300 and 50% Glycerol. Shipped at 4°C. Store at -20°C for one year. Avoid repeated freeze/thaw cycles.		
Background: Members of the cytochrome b561 (CYB561; MIM 600019) family, including FRRS1, reduce ferric to ferrous iron before its transport from the endosome to the cytoplasm (Vargas et al., 2003 [PubMed 14499595]).[supplied by OMIM, Mar 2008]		

— VALIDATION IMAGES —

Paraformaldehyde-fixed, paraffin embedded (Mouse brain); Antigen retrieval by boiling in sodium citrate buffer (pH6.0) for 15min; Block endogenous peroxidase by 3% hydrogen peroxide for 20 minutes; Blocking buffer (normal goat serum) at 37°C for 30min; Antibody incubation with (FRRS1) Polyclonal Antibody, Unconjugated (bs-16181R) at 1:500 overnight at 4°C, followed by a conjugated secondary (sp-0023) for 20 minutes and DAB staining.