

**bs-7173R**

**[ Primary Antibody ]**

## ZNF186 Rabbit pAb

**BioSS**  
ANTIBODIES

www.bioss.com.cn

sales@bioss.com.cn

techsupport@bioss.com.cn

400-901-9800

### DATASHEET

**Host:** Rabbit

**Isotype:** IgG

**Clonality:** Polyclonal

**Target:** ZNF186

**Immunogen:** KLH conjugated synthetic peptide derived from human ZNF186: 1-100/326.

**Purification:** affinity purified by Protein A

**Concentration:** 1mg/ml

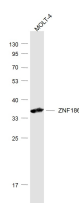
**Storage:** 0.01M TBS (pH7.4) with 1% BSA, 0.02% Proclin300 and 50% Glycerol.  
Shipped at 4°C. Store at -20°C for one year. Avoid repeated freeze/thaw cycles.

**Applications:** WB (1:500-2000)

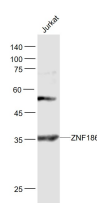
**Reactivity:** Human

**Predicted MW.:** 38 kDa

### VALIDATION IMAGES



Sample: MOLT-4 (Human) Cell Lysate at 30 ug  
Primary: Anti- ZNF186 (bs-7173R) at 1/1000  
dilution Secondary: IRDye800CW Goat Anti-  
Rabbit IgG at 1/20000 dilution Predicted band  
size: 38 kD Observed band size: 38 kD



Sample: Jurkat(Human) Cell Lysate at 30 ug  
Primary: Anti- ZNF186 (bs-7173R) at 1/1000  
dilution Secondary: IRDye800CW Goat Anti-  
Rabbit IgG at 1/20000 dilution Predicted band  
size: 38 kD Observed band size: 36 kD