
ZNF16 Rabbit pAb

Catalog Number: bs-7163R

Target Protein: ZNF16

Concentration: 1mg/ml

Form: Liquid

Host: Rabbit

Clonality: Polyclonal

Isotype: IgG

Applications: WB (1:500-2000)

Reactivity: Human (predicted:Chimpanzee, Cynomolgus Monkey, Chinese Hamster)

Predicted MW: 76 kDa

Subcellular Nucleus

Locations:

Entrez Gene: 7564

Swiss Prot: P17020

Source: KLH conjugated synthetic peptide derived from human ZNF16: 61-160/682.

Purification: affinity purified by Protein A

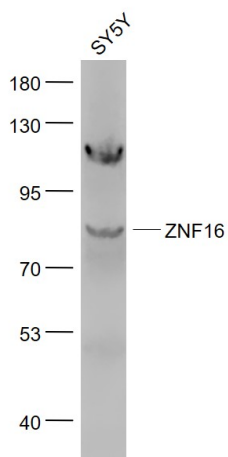
Storage: 0.01M TBS (pH7.4) with 1% BSA, 0.02% Proclin300 and 50% Glycerol.

Shipped at 4°C. Store at -20°C for one year. Avoid repeated freeze/thaw cycles.

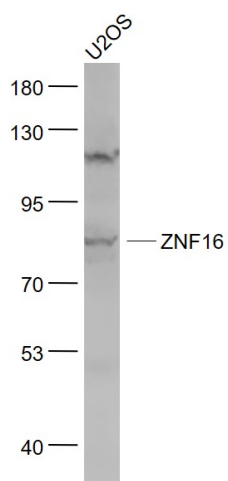
Background: The protein encoded by this gene contains multiple tandem zinc finger motifs. The encoded protein is involved in the differentiation of erythroid and megakaryocytic cells. This gene is located in a cluster of related genes on chromosome 8 encoding zinc finger proteins.

Alternative splicing results in multiple transcript variants. [provided by RefSeq, Sep 2012]

VALIDATION IMAGES



Sample: SY5Y(Human) Cell Lysate at 30 ug Primary: Anti- ZNF16 (bs-7163R) at 1/1000 dilution Secondary: IRDye800CW Goat Anti-Rabbit IgG at 1/20000 dilution Predicted band size: 76 kD Observed band size: 76 kD



Sample: U2OS(Human) Cell Lysate at 30 ug Primary: Anti- ZNF16 (bs-7163R) at 1/1000 dilution Secondary: IRDye800CW Goat Anti-Rabbit IgG at 1/20000 dilution Predicted band size: 76 kD Observed band size: 76 kD