

Recombinant mouse SIGLEC1 protein, C-His (HEK293)

Catalog Number: bs-43749P

Concentration: >1mg/ml

Species: Mouse

AA Seq: 20-1639/1695

Predicted MW: 176.7 kDa

Tags: C-His

Endotoxin: Not analyzed

Purity: >90% as determined by SDS-PAGE

Purification: AC

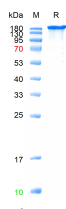
Form: Liquid

Storage: PBS (pH=7.4)

Stored at -70°C or -20°C. Avoid repeated freeze/thaw cycles

Background: This gene encodes a member of the immunoglobulin superfamily. The encoded protein is a lectin-like adhesion molecule that binds glycoconjugate ligands on cell surfaces in a sialic acid-dependent manner. It is a type I transmembrane protein expressed only by a subpopulation of macrophages and is involved in mediating cell-cell interactions. Alternative splicing produces a transcript variant encoding an isoform that is soluble rather than membrane-bound; however, the full-length nature of this variant has not been determined. [provided by RefSeq, Jul 2008].

VALIDATION IMAGES



The purity of the protein is greater than 90% as determined by reducing SDS-PAGE.