

bs-8635R**[Primary Antibody]**

Phostensin Rabbit pAb

BioSS
ANTIBODIES

www.bioss.com.cn

sales@bioss.com.cn

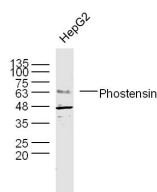
techsupport@bioss.com.cn

400-901-9800

— DATASHEET —

| | | |
|---|----------------------|---|
| Host: Rabbit | Isotype: IgG | Applications: WB (1:500-2000) |
| Clonality: Polyclonal | | Reactivity: Human (predicted: Mouse, Rat, Pig) |
| GeneID: 170954 | SWISS: Q6NYC8 | |
| Target: Phostensin | | Predicted MW.: 68 kDa |
| Immunogen: KLH conjugated synthetic peptide derived from human Phostensin: 101-200/613. | | Subcellular Location: Cytoplasm |
| Purification: affinity purified by Protein A | | |
| Concentration: 1mg/ml | | |
| Storage: 0.01M TBS (pH7.4) with 1% BSA, 0.02% Proclin300 and 50% Glycerol. Shipped at 4°C. Store at -20°C for one year. Avoid repeated freeze/thaw cycles. | | |
| Background: Protein phosphatase-1 (PP1; see MIM 176875) interacts with regulatory subunits that target the enzyme to different cellular locations and change its activity toward specific substrates. Phostensin is a regulatory subunit that targets PP1 to F-actin (see MIM 102610) cytoskeleton (Kao et al., 2007 [PubMed 17374523]).[supplied by OMIM, Mar 2008] | | |

— VALIDATION IMAGES —



Sample: HepG2 Cell (Human) Lysate at 30 ug
Primary: Anti- Phostensin (bs-8635R) at 1/300
dilution Secondary: IRDye800CW Goat Anti-
Rabbit IgG at 1/20000 dilution Predicted band
size: 68 kD Observed band size: 63 kD