

**bs-13292R****[ Primary Antibody ]****GIPR Rabbit pAb****Bioss**  
**ANTIBODIES**

www.bioss.com.cn

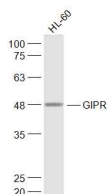
sales@bioss.com.cn

techsupport@bioss.com.cn

400-901-9800

**— DATASHEET —**

<b>Host:</b> Rabbit	<b>Isotype:</b> IgG	<b>Applications:</b> WB (1:500-2000)
<b>Clonality:</b> Polyclonal		<b>Reactivity:</b> Human, Mouse (predicted: Rat, Rabbit, Sheep, Cow)
<b>GeneID:</b> 2696	<b>SWISS:</b> P48546	<b>Predicted MW.:</b> 51 kDa
<b>Target:</b> GIPR		<b>Subcellular Location:</b> Cell membrane
<b>Immunogen:</b> KLH conjugated synthetic peptide derived from human GIPR: 21-120/466. < Extracellular >		
<b>Purification:</b> affinity purified by Protein A		
<b>Concentration:</b> 1mg/ml		
<b>Storage:</b> 0.01M TBS (pH7.4) with 1% BSA, 0.02% Proclin300 and 50% Glycerol. Shipped at 4°C. Store at -20°C for one year. Avoid repeated freeze/thaw cycles.		
<b>Background:</b> Gastric inhibitory polypeptide receptor; GIP R; GIP-R; Gippr; Gipr; GIPR_HUMAN; Glucose dependent insulinotropic polypeptide receptor; Glucose-dependent insulinotropic polypeptide receptor; Gm1081; Gm160; INSULINOTROPIC POLYPEPTIDE RECEPTOR, GLUCOSE DEPENDENT; MGC126722; RATGIPPR.		

**— VALIDATION IMAGES —**

Sample: HL-60(Human) Cell Lysate at 30 ug  
Primary: Anti-GIPR (bs-13292R) at 1/1000  
dilution Secondary: IRDye800CW Goat Anti-  
Rabbit IgG at 1/20000 dilution Predicted band  
size: 51 kD Observed band size: 48 kD