

HAPLN1 Rabbit pAb

Catalog Number: bs-15410R

Target Protein: HAPLN1

Concentration: 1mg/ml

Form: Liquid

Host: Rabbit

Clonality: Polyclonal

Isotype: IgG

Applications: IHC-P (1:100-500), IHC-F (1:100-500), IF (1:100-500)

Reactivity: Human (predicted: Mouse, Rat, Pig, Sheep, Cow, Dog, Horse)

Predicted MW: 38 kDa

Entrez Gene: 1404

Swiss Prot: P10915

Source: KLH conjugated synthetic peptide derived from human HAPLN1 : 21-120/354.

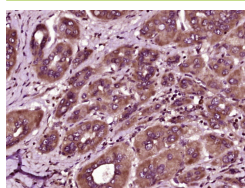
Purification: affinity purified by Protein A

Storage: 0.01M TBS (pH7.4) with 1% BSA, 0.02% Proclin300 and 50% Glycerol.

Shipped at 4°C. Store at -20°C for one year. Avoid repeated freeze/thaw cycles.

Background: The human cartilage link protein, also designated HAPLN1, is a member of the hyaluronan and proteoglycan link protein (HAPLN) family of proteins. This family contains 4 proteins with approximately 50% homology. The human cartilage link protein strengthens tissue architecture by using hyaluronic acid to stabilize the aggregates of proteoglycan monomers inside the extracellular cartilage matrix. It is widely expressed in most tissue types except brain tissue where, much like the other human cartilage link protein genes, it is weakly expressed. The HAPLN and the brain-specific CSPG genes, as well as other members of the link module superfamily, appear to have a common ancestral gene origin.

VALIDATION IMAGES



Paraformaldehyde-fixed, paraffin embedded (human liver carcinoma); Antigen retrieval by boiling in sodium citrate buffer (pH6.0) for 15min; Block endogenous peroxidase by 3% hydrogen peroxide for 20 minutes; Blocking buffer (normal goat serum) at 37°C for 30min; Antibody incubation with (HAPLN1) Polyclonal Antibody, Unconjugated (bs-15410R) at 1:400 overnight at 4°C, followed by operating according to SP Kit(Rabbit) (sp-0023) instructions and DAB staining.