

bs-15169R**[Primary Antibody]****C3orf23 Rabbit pAb****BioSS**
ANTIBODIES

www.bioss.com.cn

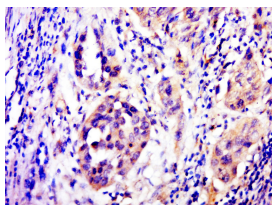
sales@bioss.com.cn

techsupport@bioss.com.cn

400-901-9800

— DATASHEET —

Host: Rabbit	Isotype: IgG	Applications: IHC-P (1:100-500)
Clonality: Polyclonal		IHC-F (1:100-500)
GeneID: 285343	SWISS: Q8N3R3	IF (1:100-500)
Target: C3orf23		Reactivity: Human (predicted: Mouse, Rat, Rabbit)
Purification: affinity purified by Protein A		
Concentration: 1mg/ml		Predicted MW.: 58 kDa
Storage: 0.01M TBS (pH7.4) with 1% BSA, 0.02% Proclin300 and 50% Glycerol. Shipped at 4°C. Store at -20°C for one year. Avoid repeated freeze/thaw cycles.		Subcellular Location: Cytoplasm
Background: C3orf23 (chromosome 3 open reading frame 23), also known as FLJ41686, MGC119530, MGC119531, MGC119532, MGC119533 or DKFZp313N062, is a 496 amino acid protein that exists as four alternatively spliced isoforms. C3orf23 is encoded by a gene mapping to human chromosome 3p21.33. Chromosome 3 is made up of approximately 214 million bases encoding over 1,100 genes. Notably, there is a chemokine receptor gene cluster and a variety of human cancer related loci on chromosome 3. Particular regions of the chromosome 3 short arm are deleted in many types of cancer cells. Key tumor suppressing genes on chromosome 3 encode apoptosis mediator RASSF1, cell migration regulator HYAL1 and angiogenesis suppressor SEMA3B. Marfan Syndrome, porphyria, von Hippel-Lindau syndrome, osteogenesis imperfecta and Charcot-Marie-Tooth disease are a few of the numerous genetic diseases associated with chromosome 3.		

— VALIDATION IMAGES —

Paraformaldehyde-fixed, paraffin embedded (human esophagus cancer); Antigen retrieval by boiling in sodium citrate buffer (pH6.0) for 15min; Block endogenous peroxidase by 3% hydrogen peroxide for 20 minutes; Blocking buffer (normal goat serum) at 37°C for 30min; Antibody incubation with (C3orf23) Polyclonal Antibody, Unconjugated (bs-15169R) at 1:500 overnight at 4°C, followed by a conjugated secondary (sp-0023) for 20 minutes and DAB staining.