

bs-7161R**[Primary Antibody]****ZNF157 Rabbit pAb****BioSS**
ANTIBODIES

www.bioss.com.cn

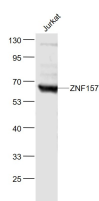
sales@bioss.com.cn

techsupport@bioss.com.cn

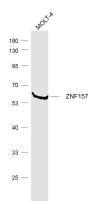
400-901-9800

— DATASHEET —

Host: Rabbit	Isotype: IgG	Applications: WB (1:500-2000)
Clonality: Polyclonal		Reactivity: Human
GeneID: 7712	SWISS: P51786	
Target: ZNF157		
Immunogen: KLH conjugated synthetic peptide derived from human ZNF157: 101-200/506.		Predicted MW.: 58 kDa
Purification: affinity purified by Protein A		Subcellular Location: Nucleus
Concentration: 1mg/ml		
Storage: 0.01M TBS (pH7.4) with 1% BSA, 0.02% Proclin300 and 50% Glycerol. Shipped at 4°C. Store at -20°C for one year. Avoid repeated freeze/thaw cycles.		
Background: This gene product is a likely zinc finger family transcription factor. It contains KRAB-A and KRAB-B domains that act as transcriptional repressors in related proteins, and multiple zinc finger DNA binding motifs and finger linking regions characteristic of the Kruppel family. This gene is part of a gene cluster on chromosome Xp11.23. [provided by RefSeq, Jul 2008]		

— VALIDATION IMAGES —

Sample: Jurkat(Human) Cell Lysate at 30 ug
Primary: Anti- ZNF157 (bs-7161R) at 1/1000
dilution Secondary: IRDye800CW Goat Anti-
Rabbit IgG at 1/20000 dilution Predicted band
size: 58 kD Observed band size: 60 kD



Sample: MOLT-4 (Human) Cell Lysate at 30 ug
Primary: Anti-ZNF157 (bs-7161R) at 1/1000
dilution Secondary: IRDye800CW Goat Anti-
Rabbit IgG at 1/20000 dilution Predicted band
size: 58 kD Observed band size: 58 kD