

**bs-7631R**

**[ Primary Antibody ]**

## MTCH2 Rabbit pAb

**Bioss**  
ANTIBODIES

www.bioss.com.cn

sales@bioss.com.cn

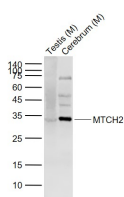
techsupport@bioss.com.cn

400-901-9800

### — DATASHEET —

<b>Host:</b> Rabbit	<b>Isotype:</b> IgG	<b>Applications:</b> WB (1:500-2000)
<b>Clonality:</b> Polyclonal		<b>Reactivity:</b> Mouse (predicted: Human, Rat, Rabbit, Cow, Horse)
<b>GeneID:</b> 23788	<b>SWISS:</b> Q9Y6C9	
<b>Target:</b> MTCH2		<b>Predicted MW.:</b> 33 kDa
<b>Immunogen:</b> KLH conjugated synthetic peptide derived from human MTCH2: 210-303/303.		<b>Subcellular Location:</b> Cell membrane ,Cytoplasm
<b>Purification:</b> affinity purified by Protein A		
<b>Concentration:</b> 1mg/ml		
<b>Storage:</b> 0.01M TBS (pH7.4) with 1% BSA, 0.02% Proclin300 and 50% Glycerol. Shipped at 4°C. Store at -20°C for one year. Avoid repeated freeze/thaw cycles.		
<b>Background:</b> The substrate transported is not yet known. Induces mitochondrial depolarization.		

### — VALIDATION IMAGES —



Sample: Lane 1: Testis (Mouse) Lysate at 40 ug  
Lane 2: Cerebrum (Mouse) Lysate at 40 ug  
Primary: Anti-MTCH2 (bs-7631R) at 1/1000  
dilution Secondary: IRDye800CW Goat Anti-Rabbit IgG at 1/20000 dilution Predicted band size: 33 kD Observed band size: 33 kD