

bs-13612R**[Primary Antibody]****BioSS**
ANTIBODIES

www.bioss.com.cn

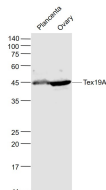
sales@bioss.com.cn

techsupport@bioss.com.cn

400-901-9800

Tex19A Rabbit pAb**— DATASHEET —**

Host: Rabbit	Isotype: IgG	Applications: WB (1:500-2000)
Clonality: Polyclonal		
GeneID: 73679	SWISS: Q99MV2	
Target: Tex19A		
Immunogen: KLH conjugated synthetic peptide derived from mouse Tex19A: 1-100/351.		
Purification: affinity purified by Protein A		Reactivity: Mouse, Rat
Concentration: 1mg/ml		
Storage: 0.01M TBS (pH7.4) with 1% BSA, 0.02% Proclin300 and 50% Glycerol. Shipped at 4°C. Store at -20°C for one year. Avoid repeated freeze/thaw cycles.		Predicted MW.: 40 kDa
Background: The testis expressed gene 19 (Tex19) is duplicated in mouse and rat to give two genes Tex19.1 and Tex19.2. Tex19.1 expression is limited to pluripotent cells and germ cells, and is downregulated after differentiation. The Tex19.1 (-/-) knockout male mice have impaired spermatogenesis.		Subcellular Location: Nucleus

— VALIDATION IMAGES —

Sample: placenta(mouse) Lysate at 40 ug
ovary(mouse) Lysate at 40 ug Primary: Anti-
Tex19A (bs-13612R) at 1/1000 dilution
Secondary: IRDye800CW Goat Anti-Rabbit IgG at
1/20000 dilution Predicted band size: 45 kD
Observed band size: 45 kD