

bs-6301R**[Primary Antibody]****MAP3K2 Rabbit pAb****BioSS**
ANTIBODIES

www.bioss.com.cn

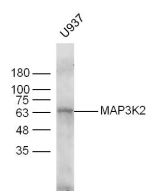
sales@bioss.com.cn

techsupport@bioss.com.cn

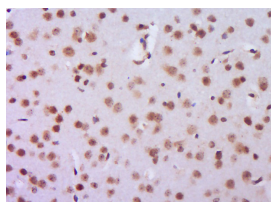
400-901-9800

— DATASHEET —

| | | |
|---|---|--|
| Host: Rabbit Clonality: Polyclonal GeneID: 10746 Target: MAP3K2 Immunogen: KLH conjugated synthetic peptide derived from human MAP3K2/MEKK2: 21-120/619. Purification: affinity purified by Protein A Concentration: 1mg/ml Storage: 0.01M TBS (pH7.4) with 1% BSA, 0.02% Proclin300 and 50% Glycerol. Shipped at 4°C. Store at -20°C for one year. Avoid repeated freeze/thaw cycles. Background: Component of a protein kinase signal transduction cascade. Regulates the JNK and ERK5 pathways by phosphorylating and activating MAP2K5 and MAP2K7 (By similarity). Plays a role in caveolae kiss-and-run dynamics. Sequence similarities; Belongs to the protein kinase superfamily. STE Ser/Thr protein kinase family. MAP kinase kinase kinase subfamily. Contains 1 OPR domain. Contains 1 protein kinase domain. | Isotype: IgG SWISS: Q9Y2U5 | Applications: WB (1:500-2000) IHC-P (1:100-500) IHC-F (1:100-500) IF (1:100-500) Reactivity: Human, Mouse (predicted: Rat, Rabbit, Pig, Cow, Chicken, Horse) Predicted MW.: 68 kDa Subcellular Location: Cytoplasm ,Nucleus |
|---|---|--|

— VALIDATION IMAGES —

Sample: U937 Cell (Human) Lysate at 40 ug
Primary: Anti-MAP3K2 (bs-6301R) at 1/300
dilution Secondary: IRDye800CW Goat Anti-Rabbit IgG at 1/20000 dilution Predicted band size: 68 kD Observed band size: 65 kD



Paraformaldehyde-fixed, paraffin embedded (Mouse brain); Antigen retrieval by boiling in sodium citrate buffer (pH6.0) for 15min; Block endogenous peroxidase by 3% hydrogen peroxide for 20 minutes; Blocking buffer (normal goat serum) at 37°C for 30min; Antibody incubation with (MAP3K2) Polyclonal Antibody, Unconjugated (bs-6301R) at 1:400 overnight at 4°C, followed by operating according to SP Kit(Rabbit) (sp-0023) instructions and DAB staining.