

bs-11170R

[Primary Antibody]

NXPH1 Rabbit pAb

Bioss
ANTIBODIES

www.bioss.com.cn

sales@bioss.com.cn

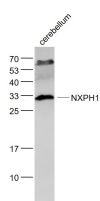
techsupport@bioss.com.cn

400-901-9800

— DATASHEET —

Host: Rabbit	Isotype: IgG	Applications: WB (1:500-2000)
Clonality: Polyclonal		Reactivity: Mouse (predicted: Human, Rat, Rabbit, Pig, Cow, Chicken)
GeneID: 30010	SWISS: P58417	
Target: NXPH1		Predicted MW.: 29 kDa
Immunogen: KLH conjugated synthetic peptide derived from human NXPH1: 131-230/271.		Subcellular Location: Secreted
Purification: affinity purified by Protein A		
Concentration: 1mg/ml		
Storage: 0.01M TBS (pH7.4) with 1% BSA, 0.02% Proclin300 and 50% Glycerol. Shipped at 4°C. Store at -20°C for one year. Avoid repeated freeze/thaw cycles.		
Background: May be signaling molecules that resemble neuropeptides and that act by binding to alpha-neurexins and possibly other receptors.		

— VALIDATION IMAGES —



Sample: Cerebellum (Mouse) Lysate at 40 ug
Primary: Anti- NXPH1 (bs-11170R) at 1/1000 dilution
Secondary: IRDye800CW Goat Anti-Rabbit IgG at 1/20000 dilution
Predicted band size: 29 kD
Observed band size: 30 kD