

Recombinant human GH protein (Active, CHO)

Catalog Number: bs-48087P

Species: Human

AA Seq: 27-217/217

Predicted MW: 22

Tags: Tag free

Activity: Yes

Endotoxin: ≤ 10 EU/mg

Purity: $\geq 95\%$ as determined by SDS-PAGE.

Purification: AC

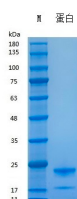
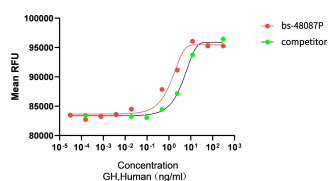
Form: Lyophilized

Storage: 0.22 μ m-filtered solution containing 10mM PB

Use a manual defrost freezer and avoid repeated freeze-thaw cycles. 36 months at -20°C to -80°C in lyophilized state. 6 months at -20°C to -80°C under sterile conditions after reconstitution. 7-10 days at 2°C to 8°C under sterile conditions after reconstitution.

Background: The protein encoded by this gene is a member of the somatotropin/prolactin family of hormones which play an important role in growth control. The gene, along with four other related genes, is located at the growth hormone locus on chromosome 17 where they are interspersed in the same transcriptional orientation; an arrangement which is thought to have evolved by a series of gene duplications. The five genes share a remarkably high degree of sequence identity. Alternative splicing generates additional isoforms of each of the five growth hormones, leading to further diversity and potential for specialization. This particular family member is expressed in the pituitary but not in placental tissue as is the case for the other four genes in the growth hormone locus. Mutations in or deletions of the gene lead to growth hormone deficiency and short stature. [provided by RefSeq, Jul 2008]

VALIDATION IMAGES



Measured by its ability to stimulate the proliferation of Nb2-11 cells. Expected ED50 ≤ 0.1 ng/ml, corresponding to a specific

The purity of the protein is greater than 95% as determined by reducing SDS-PAGE.

bioactivity of $\geq 1 \times 10^7$ units/mg.