

Recombinant human LR3 IGF1 protein (Active, CHO)

Catalog Number: bs-48067P

Species: Human

AA Seq: MFPAMPLSSLFVN+Gly49-Ala118(E51R)

Predicted MW: 9

Tags: Tag free

Activity: Yes

Endotoxin: ≤ 10 EU/mg

Purity: $\geq 95\%$ as determined by SDS-PAGE.

Purification: AC

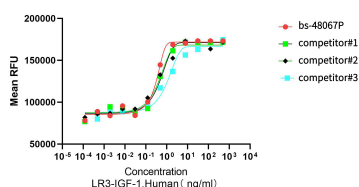
Form: Lyophilized

Storage: Lyophilized from a 0.22 μ m-filtered solution containing PBS, 5% Mannitol and 0.01% Tween 80, pH7.4

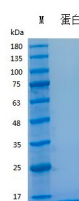
Use a manual defrost freezer and avoid repeated freeze-thaw cycles. 36 months at -20°C to -80°C in lyophilized state. 6 months at -20°C to -80°C under sterile conditions after reconstitution. 7-10 days at 2°C to 8°C under sterile conditions after reconstitution.

Background: The protein encoded by this gene is similar to insulin in function and structure and is a member of a family of proteins involved in mediating growth and development. The encoded protein is processed from a precursor, bound by a specific receptor, and secreted. Defects in this gene are a cause of insulin-like growth factor I deficiency. Several transcript variants encoding different isoforms have been found for this gene.[provided by RefSeq, Mar 2009]

VALIDATION IMAGES



Measured in a serum-free cell proliferation assay using MCF-7 human breast cancer cells. The ED50 for this effect is ≤ 1.5 ng/mL.



The purity of the protein is greater than 95% as determined by reducing SDS-PAGE.