

bsm-33932M**[Primary Antibody]****MBP Mouse mAb****Bioss**
ANTIBODIES

www.bioss.com.cn

sales@bioss.com.cn

techsupport@bioss.com.cn

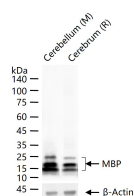
400-901-9800

— DATASHEET —**Host:** Mouse**Isotype:** IgG1, k**Clonality:** Monoclonal**CloneNo.:** 7B12**GeneID:** 4155**SWISS:** P02686**Target:** MBP**Immunogen:** KLH conjugated synthetic peptide derived from human MBP: 150-250/304.**Purification:** affinity purified by Protein A**Concentration:** 1mg/ml**Storage:** 0.01M TBS (pH7.4) with 1% BSA, 0.02% Proclin300 and 50% Glycerol.

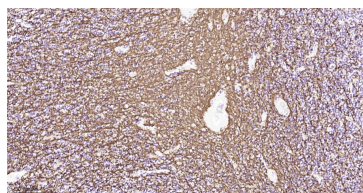
Shipped at 4°C. Store at -20°C for one year. Avoid repeated freeze/thaw cycles.

Background: Oligodendrocyte Marker

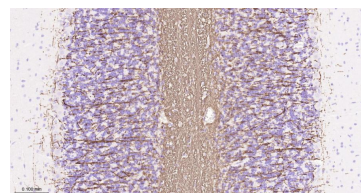
The classic group of Myelin basic protein (MBP) isoforms (isoforms 4 to 14) are with PLP the most abundant protein components of the myelin membrane in the CNS. They have a role in both its formation and stabilization. The smaller isoforms might have an important role in remyelination of denuded axons in multiple sclerosis. The non classic group of MBP isoforms (isoforms 1 to 3/Golli MBPs) may preferentially have a role in the early developing brain long before myelination, maybe as components of transcriptional complexes, and may also be involved in signaling pathways in T cells and neural cells. Differential splicing events combined to optional posttranslational modifications give a wide spectrum of isomers, each of them having maybe a specialized function.

Applications: WB (1:1000-2000)**IHC-P** (1:200-1000)**IHC-F** (1:200-1000)**IF** (1:200-1000)**Reactivity:** Human, Mouse, Rat**Predicted MW.:** 33 kDa**Subcellular Location:** Cell membrane ,Cytoplasm**— VALIDATION IMAGES —**

25 ug total protein per lane of various lysates (see on figure) probed with MBP monoclonal antibody, unconjugated (bsm-33932M) at 1:2000 dilution and 4°C overnight incubation. Followed by conjugated secondary antibody incubation at r.t. for 60 min.



Paraformaldehyde-fixed, paraffin embedded Human Cerebellum; Antigen retrieval by boiling in sodium citrate buffer (pH6.0) for 15 min; The section was incubated with MBP Monoclonal Antibody, Unconjugated (bsm-33932M) at 1:500 overnight at 4°C, followed by conjugation to the bs-40296G-HRP and DAB (C-0010) staining.



Paraformaldehyde-fixed, paraffin embedded Rat Cerebellum; Antigen retrieval by boiling in sodium citrate buffer (pH6.0) for 15 min; The section was incubated with MBP Monoclonal Antibody, Unconjugated (bsm-33932M) at 1:500 overnight at 4°C, followed by conjugation to the bs-40296G-HRP and DAB (C-0010) staining.