

bs-0325R**[Primary Antibody]****GAD65 Rabbit pAb****BioSS**
ANTIBODIES

www.bioss.com.cn

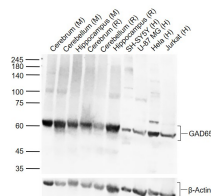
sales@bioss.com.cn

techsupport@bioss.com.cn

400-901-9800

DATASHEET

Host: Rabbit Clonality: Polyclonal GeneID: 14417 Target: GAD65 Purification: affinity purified by Protein A Concentration: 1mg/ml Storage: 0.01M TBS (pH7.4) with 1% BSA, 0.02% Proclin300 and 50% Glycerol. Shipped at 4°C. Store at -20°C for one year. Avoid repeated freeze/thaw cycles. Background: This gene encodes one of several forms of glutamic acid decarboxylase, identified as a major autoantigen in insulin-dependent diabetes. The enzyme encoded is responsible for catalyzing the production of gamma-aminobutyric acid from L-glutamic acid. A pathogenic role for this enzyme has been identified in the human pancreas since it has been identified as an autoantibody and an autoreactive T cell target in insulin-dependent diabetes. This gene may also play a role in the stiff man syndrome. Alternative splicing results in multiple transcript variants that encode the same protein. [provided by RefSeq, Oct 2008]	Isotype: IgG SWISS: P48320	Applications: WB (1:500-2000) ELISA (1:5000-10000) Reactivity: Human, Mouse, Rat Predicted MW.: 65 kDa Subcellular Location: Cell membrane ,Cytoplasm
--	---	---

VALIDATION IMAGES

Sample: Lane 1: Mouse Cerebrum tissue lysates
 Lane 2: Mouse Cerebellum tissue lysates Lane 3:
 Mouse Hippocampus tissue lysates Lane 4: Rat
 Cerebrum tissue lysates Lane 5: Rat Cerebellum
 tissue lysates Lane 6: Rat Hippocampus tissue
 lysates Lane 7: Human SH-SY5Y cell lysates Lane
 8: Human U-87 MG cell lysates Lane 9: Human
 Hela cell lysates Lane 10: Human Jurkat cell
 lysates Primary: Anti-GAD65 (bs-0325R) at 1/1000
 dilution Secondary: IRDye800CW Goat Anti-
 Rabbit IgG at 1/20000 dilution Predicted band
 size: 65 kDa Observed band size: 62 kDa