

Recombinant human CD248 protein, C-His (HEK293)

Catalog Number: bs-43740P

Concentration: >0.5mg/ml

Species: Human

AA Seq: 18-685/757

Predicted MW: 73.3

Tags: C-His

Endotoxin: Not analyzed

Purity: >90% as determined by SDS-PAGE

Purification: AC

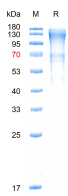
Form: Liquid

Storage: PBS (pH=7.4)

Stored at -70°C or -20°C. Avoid repeated freeze/thaw cycles.

Background: The transmembrane glycoprotein Tumor endothelial marker 1 (TEM1) is highly expressed in tumor endothelial cells however it is barely detectable on normal endothelial cells. It is believed to play a role in tumor angiogenesis. It is expressed in stromal fibroblasts, metastatic hepatic lesions and during angiogenesis of corpus luteum formation and wound healing. TEM1 is being investigated as a potential target for cancer treatment.

VALIDATION IMAGES



The purity of the protein is greater than 85% as determined by reducing SDS-PAGE.