

CD62p Rabbit pAb

Catalog Number: bs-10770R

Target Protein: CD62p

Concentration: 1mg/ml

Form: Liquid

Host: Rabbit

Clonality: Polyclonal

Isotype: IgG

Applications: WB (1:500-2000), Flow-Cyt (1µg/Test)

Reactivity: Mouse (predicted:Rat)

Predicted MW: 88 kDa

Entrez Gene: 6403

Swiss Prot: P16109

Source: KLH conjugated synthetic peptide derived from human CD62p: 21-120/830.

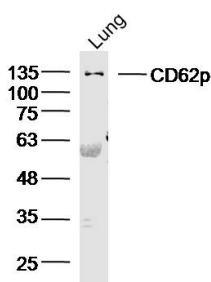
Purification: affinity purified by Protein A

Storage: 0.01M TBS (pH7.4) with 1% BSA, 0.02% Proclin300 and 50% Glycerol.

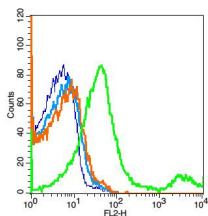
Shipped at 4°C. Store at -20°C for one year. Avoid repeated freeze/thaw cycles.

Background: This gene encodes a 140 kDa protein that is stored in the alpha-granules of platelets and Weibel-Palade bodies of endothelial cells. This protein redistributes to the plasma membrane during platelet activation and degranulation and mediates the interaction of activated endothelial cells or platelets with leukocytes. The membrane protein is a calcium-dependent receptor that binds to sialylated forms of Lewis blood group carbohydrate antigens on neutrophils and monocytes. Alternative splice variants may occur but are not well documented. [provided by RefSeq, Jul 2008]

VALIDATION IMAGES



Sample: Lung (Mouse) Lysate at 40 ug Primary: Anti-CD62p(bs-10770R) at 1/300 dilution Secondary: IRDye800CW Goat Anti-Rabbit IgG at 1/20000 dilution Predicted band size: 88 kD Observed band size: 135 kD



Blank control: Mouse kidney cells(blue). Primary Antibody:Rabbit Anti- CD62P antibody(bs-10770R), Dilution: 1µg in 100 1µL 1X PBS containing 0.5% BSA; Isotype Control Antibody: Rabbit IgG(orange) ,used under the same conditions); Secondary Antibody: Goat anti-rabbit IgG-PE(white blue), Dilution: 1:200 in 1 X PBS containing 0.5% BSA.