

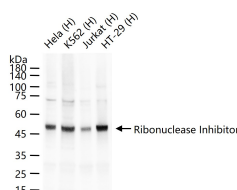
bs-42479R**[Primary Antibody]****Ribonuclease Inhibitor Rabbit pAb****Bioss**
ANTIBODIES

www.bioss.com.cn

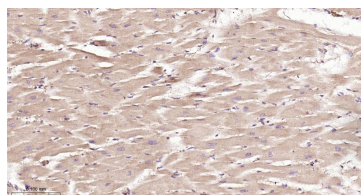
sales@bioss.com.cn

techsupport@bioss.com.cn

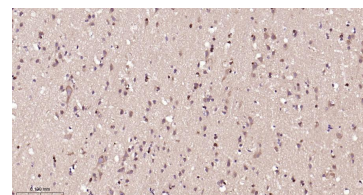
400-901-9800

DATASHEET**Host:** Rabbit**Isotype:** IgG**Clonality:** Polyclonal**GeneID:** 6050**SWISS:** P13489**Target:** Ribonuclease Inhibitor**Immunogen:** Recombinant human Ribonuclease Inhibitor: 2-214/461.**Purification:** affinity purified by Protein A**Concentration:** 1mg/ml**Storage:** 0.01M TBS (pH7.4) with 1% BSA, 0.02% Proclin300 and 50% Glycerol.
Shipped at 4°C. Store at -20°C for one year. Avoid repeated freeze/thaw cycles.**Background:** Ribonuclease inhibitor which inhibits RNASE1, RNASE2 and ANG. May play role in redox homeostasis.**Applications:** **WB** (1:500-2000)
IHC-P (1:100-500)
IHC-F (1:100-500)
IF (1:100-500)
Flow-Cyt (1µg/Test)**Reactivity:** Human**Predicted MW.:** 50 kDa**Subcellular Location:** Cytoplasm**VALIDATION IMAGES**

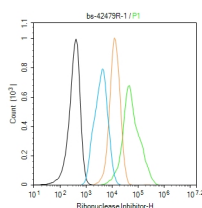
25 µg total protein per lane of various lysates (see on figure) probed with Ribonuclease Inhibitor polyclonal antibody, unconjugated (bs-42479R) at 1:1000 dilution and 4°C overnight incubation. Followed by conjugated secondary antibody incubation at r.t. for 60 min.



Paraformaldehyde-fixed, paraffin embedded Human Heart; Antigen retrieval by boiling in sodium citrate buffer (pH6.0) for 15 min; The section was incubated with Ribonuclease Inhibitor Polyclonal Antibody, Unconjugated (bs-42479R) at 1:200 overnight at 4°C, followed by conjugation to the bs-0295G-HRP and DAB (C-0010) staining.



Paraformaldehyde-fixed, paraffin embedded Human Cerebrum; Antigen retrieval by boiling in sodium citrate buffer (pH6.0) for 15 min; The section was incubated with Ribonuclease Inhibitor Polyclonal Antibody, Unconjugated (bs-42479R) at 1:200 overnight at 4°C, followed by conjugation to the bs-0295G-HRP and DAB (C-0010) staining.



The HepG2 (H) cells were fixed with 4% PFA (10 min at r.t.) and then permeabilized with 90% ice-cold methanol for 20 min at -20°C, the cells then were incubated in 5% BSA to block non-specific protein-protein interactions (30 min at r.t.). Primary Antibody (green): Rabbit Anti-Ribonuclease Inhibitor antibody (bs-42479R): 1 µg/10⁶ cells; Secondary Antibody (white blue): Goat anti-Rabbit IgG-BF488 (bs-60295G-BF488): 1 µg/test. Isotype Control (orange): Rabbit IgG (bs-0295P). Blank control (black): PBS. Acquisition of 20,000 events was performed.