

bsm-52280R

[Primary Antibody]

MAP2K1/2 Recombinant Rabbit mAb

Bioss
ANTIBODIES

www.bioss.com.cn

sales@bioss.com.cn

techsupport@bioss.com.cn

400-901-9800

— DATASHEET —

Host: Rabbit

Clonality: Recombinant

GeneID: 5604

Target: MAP2K1/2

Immunogen: A synthesized peptide derived from human MEK1: 1-393.

Purification: affinity purified by Protein A

Concentration: 1mg/ml

Storage: 0.01M TBS (pH7.4) with 1% BSA, 0.02% Proclin300 and 50% Glycerol.
Shipped at 4°C. Store at -20°C for one year. Avoid repeated freeze/thaw cycles.

Isotype: IgG

CloneNo.: 4H7

SWISS: Q02750

Applications: WB (1:500-2000)

IHC-P (1:50-200)

IHC-F (1:50-200)

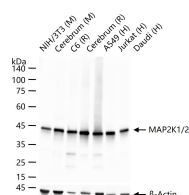
IF (1:50-200)

ICC/IF (1:50-200)

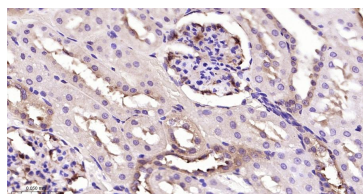
Reactivity: Human, Mouse, Rat

Predicted MW.: 43 kDa

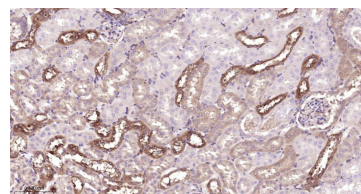
— VALIDATION IMAGES —



25 ug total protein per lane of various lysates (see on figure) probed with MAP2K1/2 monoclonal antibody, unconjugated (bsm-52280R) at 1:1000 dilution and 4°C overnight incubation. Followed by conjugated secondary antibody incubation at r.t. for 60 min.



Paraformaldehyde-fixed, paraffin embedded Rat Kidney; Antigen retrieval by boiling in sodium citrate buffer (pH6.0) for 15 min; The section was incubated with MAP2K1/2 Monoclonal Antibody, Unconjugated (bsm-52280R) at 1:200 overnight at 4°C, followed by conjugation to the bs-0295G-HRP and DAB (C-0010) staining.



Paraformaldehyde-fixed, paraffin embedded Mouse Kidney; Antigen retrieval by boiling in sodium citrate buffer (pH6.0) for 15 min; The section was incubated with MAP2K1/2 Monoclonal Antibody, Unconjugated (bsm-52280R) at 1:200 overnight at 4°C, followed by conjugation to the bs-0295G-HRP and DAB (C-0010) staining.